



Count on it.

Sand Pro[®] 3040 & 5040



TORO. Count on it.

QAS changes everything.

Sand Pro® 3040 & 5040

- Patent-pending Quick Attach System™ (QAS)
- 17 available attachments
- Series/Parallel™ 3WD
- Hydraulic power steering (5040)
- Front (5040), mid and rear attachment points
- Steerable front attachments

It's time to demand more from a bunker rake. With the patent-pending Quick Attach System (QAS) and 17 attachments, the new Sand Pro 3040 and 5040 are versatile utility vehicles with as many uses outside the bunker as in it. QAS lets you change most attachments in under a minute and gives you more options out on the course. The Toro® Sand Pro keeps your bunkers in tournament condition every day.



Count on Innovation

Perfect under pressure.

Precisely calibrated tension springs and the Toro True Float contour following system produce the uncommonly smooth performance of the new Flex Blade. They enable the blade to self adjust, maintaining consistent pressure over the contour of the bunker thereby reducing operator influence and damage.

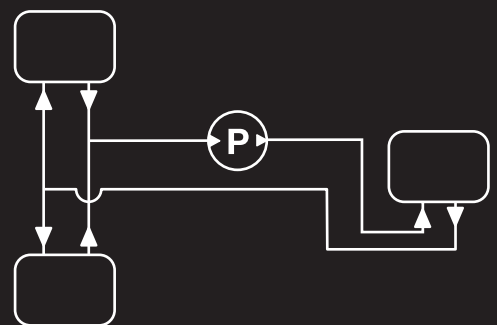




The segmented grooming broom attachment smoothes and shapes without fluffing.

Switch blade.

The new Toro Sand Pro offers up to 17 attachments designed to make you more productive and keep your bunkers in pristine condition. Leading the way is an innovative Flex Blade for the Sand Pro 5040. It raises and lowers hydraulically while tension springs maintain consistent pressure over the slope of the bunker. It is the first blade offering a steerable design making it ideal for pushing, packing, shaping and smoothing bunkers. The flexible design also prevents tip damage and gouging on the lip or walls of the bunker. A spring-balanced manual blade is also available. Factor in the hydraulic power steering and you have a compact utility vehicle that works hard with effortless maneuverability.

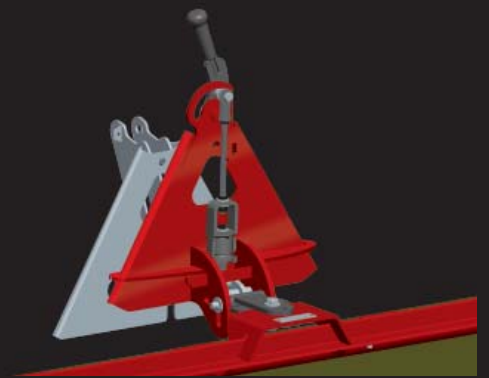


3-wheel Series/Parallel drive provides excellent traction going in and out of bunkers, even when pushing up sand after washouts.



We spell productivity Q-A-S.

The need for a more versatile bunker rake led to the development of the Toro® Quick Attach System.™ QAS turns what was once a lengthy, tedious procedure into a quick change that any member of your maintenance crew can master in seconds. Now you can repair a bunker, groom wet or dry sand, blow debris or reconstruct a tee all without the need for dedicated machines. In most cases, changing attachments takes less than a minute. Both Sand Pro models offer a rear hydraulic QAS and mid-mount scarifier while the 5040 offers an optional front hydraulic QAS. The ability to carry three attachments ensures that you have the right tool for the right job at the right time.



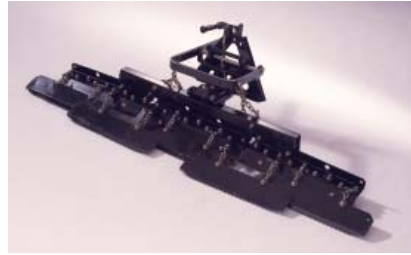
Change from a spring rake to a drag mat in seconds—without any tools.

Attachments

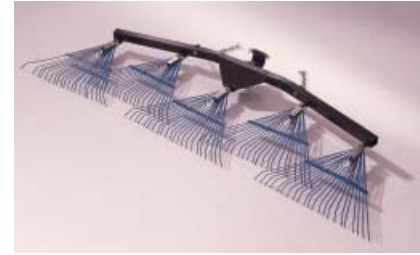
Segmented grooming broom



Tooth rake



Spring rake



Drag mat carrier system
Coco mat



Cyclone™ 1000 blower



Spring balanced manual blade



Also Available:

- Flex blade
- Finish grader
- Spiker
- Steel drag mat
- 60" manual blade
- Utility box
- Storage box
- Spring tine teeth
- Solid tine scarifier teeth and leveling blade
- Carbide tipped solid tine scarifier teeth
- Weeding tine teeth



The tools you need when you need them.

Rear grooming attachments offer the flexibility to handle a variety of sand and weather conditions. The rear broom comes in three sections with two hinge points that allow the bristles to follow the contours of even the most intricate bunkers. The broom is ideal for contour shaping and grooming without the fluffing created by traditional rake attachments. Drag mats

come in steel and coco designs that swap easily using the QAS. The coco drag mat works well for brushing in topdressing on greens. Smooth tires are available for use on greens. A mid-mount attachment on the 5040 allows you to scarify and groom in a single pass. Mid-mount attachments can rotate up and out of the way when entering and exiting bunkers to protect the bunker lip.

Specifications for Sand Pro® 3040 & 5040

Engine

Model: Vanguard® V-Twin cylinder, 4-cycle, OHV
Rating: 3040: 16 hp (11.9 kW), @ 3600 rpm
5040: 18 hp (13.4 kW) @ 3600 rpm
Displacement: 3040: 29.3 cu. in. (480 cc); 5040: 34.8 cu. in. (570 cc)
Oil capacity: 1.75 quart (1.8 liter)
Fuel/capacity: Gasoline/5 gallon (18.9 liter)
Cooling: Air (high flow blower)
Air cleaner system: Remote mounted 3-phase Donaldson® air cleaner

Traction Unit

Drive: Direct driven hydrostatic variable speed displacement piston pump to 3 hydraulic motors for 3WD, patented Series/Parallel™ hydraulic traction system
Brakes: Dynamic braking through the hydrostatic transmission, hand actuated brake lever
Steering: 15" (38 cm) diameter steering wheel, zero turning radius.
3040: Gear drive manual steering 5040: Hydraulic power steering
Gauges: Hour meter
Tires: Three 22 x 11.00-8 pneumatic tubeless tires
Hydraulic oil: 5.0 gallon (18.9 liter). 35 micron replaceable cartridge
Main frame: Welded rectangular tubular steel frame construction
Seat: High-back cushion seat w/drain hole, 4" (10.2 cm) front-back adjustment w/additional 1.75" (4.5 cm) mounting adjustment, arm rests optional
Controls: Hand operated choke, throttle, and hydraulic control for raising/lowering with float, 3040: Rear hydraulic lift and lower controls, 5040: Front (optional) and rear hydraulic lift and lower controls

Ground Speed

Infinitely variable 0-10 mph (16 km/h) for.; 4.3 mph (6.9 km/h) rev.

Electrical

Battery: 12 volt, 15 amp., 300 CCA @ 0°F
Starter: 12 volt electric

Sound Level (operator)

87 dB(A)

Dimensions

Width: 58" (147 cm); **Length:** 67.5" (171.5 cm)
Height: 45.25" (114.9 cm); **Wheelbase:** 42.75" (108 cm)
Weight: Net weight (less fluids): 930 lbs. (421.8 kg)
Ground clearance: 6.0" (15.2 cm)

Attachments & Accessories (Optional)

QAS Mount

Hydraulic Flex Blade (5040 only): Front QAS, 36" (91.4 cm) width steel blade, 4 position settings – raise, hold, lower, and float; transport height: 8.5" (21.5 cm)

Grooming broom: Rear QAS, 3 brooms, 72.6" (184.9 cm) wide
Tooth rake: Rear QAS, 72" (183 cm) width, with 5 rake sections, 27 prongs adjustable for depth and wear

Spring rake: Rear QAS, 76" (193 cm) width, with 5 rake sections and spring teeth for excellent floatation and minimal surface disruption

Drag mat carrier system: Rear QAS, 72" (183 cm) width, steel or coco drag mats, 2' (61 cm) working surface, hydraulic raise/lower

Cyclone 1000 blower: Rear QAS, quick connect, hydraulic power, 2000 rpm fan speed (2700 cfm @ 81 mph)

Finish grader: Rear QAS, 66" (168 cm) width, box plow and scarifier, 1.8" (4.5 cm) max working depth, spring loaded to allow relief if an obstruction is hit; hardened carbide tips available for scarifier teeth

Spiker: Rear QAS, 57.6" (746 cm) width, 1.25" (3.1 cm) max working depth, 2.4" (6.1 cm) blade spacing; two independently floating units, with 12 spiker blades and 11 hold down fingers

Mid-Mount

Scarifier/leveling blade: Selectable depth from 0-1.5" (3.8 cm), 52" (132.1 cm) wide, transport height: 6.75" (17.1 cm)

Additional

Manual blade: 40" (101 cm) width steel blade, transport height: 11" (27.9 cm), spring assisted for raising plow, optional 60" (152.4 cm) blade kit available

Turf tire: 22 x 11.00-8

Hitch kit: 200 lbs (90.7 kg) gross trailer weight/hitch load

See product specifications manual for additional attachments.

Warranty: Two year limited

TORO® PROFESSIONAL SERVICES

Toro Financing A full service offering for all your equipment and irrigation purchases. Flexible financing options can be tailored to meet your operational needs.

Toro Protection Plus Extended Protection Plan Protect your budget and your equipment investment. Plans are available for both new and used equipment, and you can choose from various terms to fit your financing terms.

Toro Genuine Parts Keep the productivity and performance of your equipment at its peak. Learn about Performance Parts pricing and MVP kits. Find replacement parts online at Toro.com/partviewer.

Toro Training Toro Factory Service Schools are available. Explore the training and customer care areas of Toro.com and ToroNSN.com for readily available education and training materials.

Toro Controller Repair Provides irrigation controller boards ready for immediate board exchange to assure that downtime is minimal and your turf stays protected. Toro is the choice for reliability.

Toro NSN® An industry-first support network that provides reliable, around-the-clock irrigation central control system troubleshooting and operation assistance. Call 1-800-ASK-TORO.

Products depicted in this brochure are for demonstration purposes only.
Actual products offered for sale may vary.
©2006 The Toro Company, 8111 Lyndale Ave. S., Bloomington, MN 55420-1196
Part No. 06-060-T. Printed in U.S.A.

Toro.com



Count on it.