



**Count on it.**

**Parts Catalog**

**ProCore® Processor**

**Model No. 09749—Serial No. 311000001 and Up**

# Ordering Replacement Parts

To order replacement parts, please supply the part number, the quantity, and the description of each part desired.

## Understanding Reference Numbers

Each identified part in an illustration has a reference number. The reference number for a part also appears in the parts list, along with other information about the part.

This catalog uses two special reference number formats, one to indicate parts in a service assembly and another to indicate the quantity of a given part in an illustration.

## Service Assembly Reference Numbers

Parts in service assemblies have reference numbers in the form a:b. The a represents the reference number of the entire service assembly and the b represents a sequential number unique to each part within the service assembly.

For example, a wheel assembly might be identified by reference number 6, the tire by 6:1, the valve by 6:2, and the wheel by 6:3. When you order the assembly identified by reference number 6, you receive all parts identified by reference numbers 6:1, 6:2, and 6:3. However, you may also order any part individually. Reference numbers of this type appear in illustration and in parts lists.

## Reference Numbers Indicating Quantity

In an illustration, if a reference number indicates more than one part, the reference number has the form nX y. The n represents the quantity of the part, the X is the multiplication symbol, and the y represents the reference number.

For example, in an illustration, the reference number 2X 37 means that two of the parts identified by reference number 37 are indicated.

# List of Abbreviations

**AR:** as required

**ASM:** assembly

**BBC:** blade brake control

**BHTF:** button head thread forming

**CARR:** carriage

**CCW:** counter clockwise

**CW:** clockwise

**DEG:** degrees

**DPA:** Dual Point Adjustment

**ECM:** electronic control module

**EXT:** external

**FH:** flat head

**GA:** gauge

**HD:** heavy-duty

**HF:** hex flange

**HH:** hex head

**HHF:** hex head flange

**HHFTF:** hex head flange thread forming

**HJ:** hex jam

**HLH:** hex lag head

**HOC:** height-of-cut

**HSBH:** hex socket button head

**HSFH:** hex socket flat head

**HSH:** hex socket head

**HWH:** hex washer head

**HWHTF:** hex washer head thread forming

**HYD:** hydraulic

**LH:** left hand

**LP:** Liquid Propane

**NI:** nylon insert

**NPTF:** national pipe thread fine

**PFH:** phillips flat head

**PPH:** phillips pan head

**PPHTF:** phillips pan head thread forming

**PRH:** phillips round head

**PTH:** phillips truss head

**PTO:** power-take-off

**RH:** right hand

**ROPS:** roll-over protection system

**RRB:** rear roller brush

**SFH:** slotted fillister head

**SHH:** slotted hex head

**SHWH:** slotted hex washer head

**SPH:** slotted pan head

**SQH:** square head

**SRH:** slotted round head

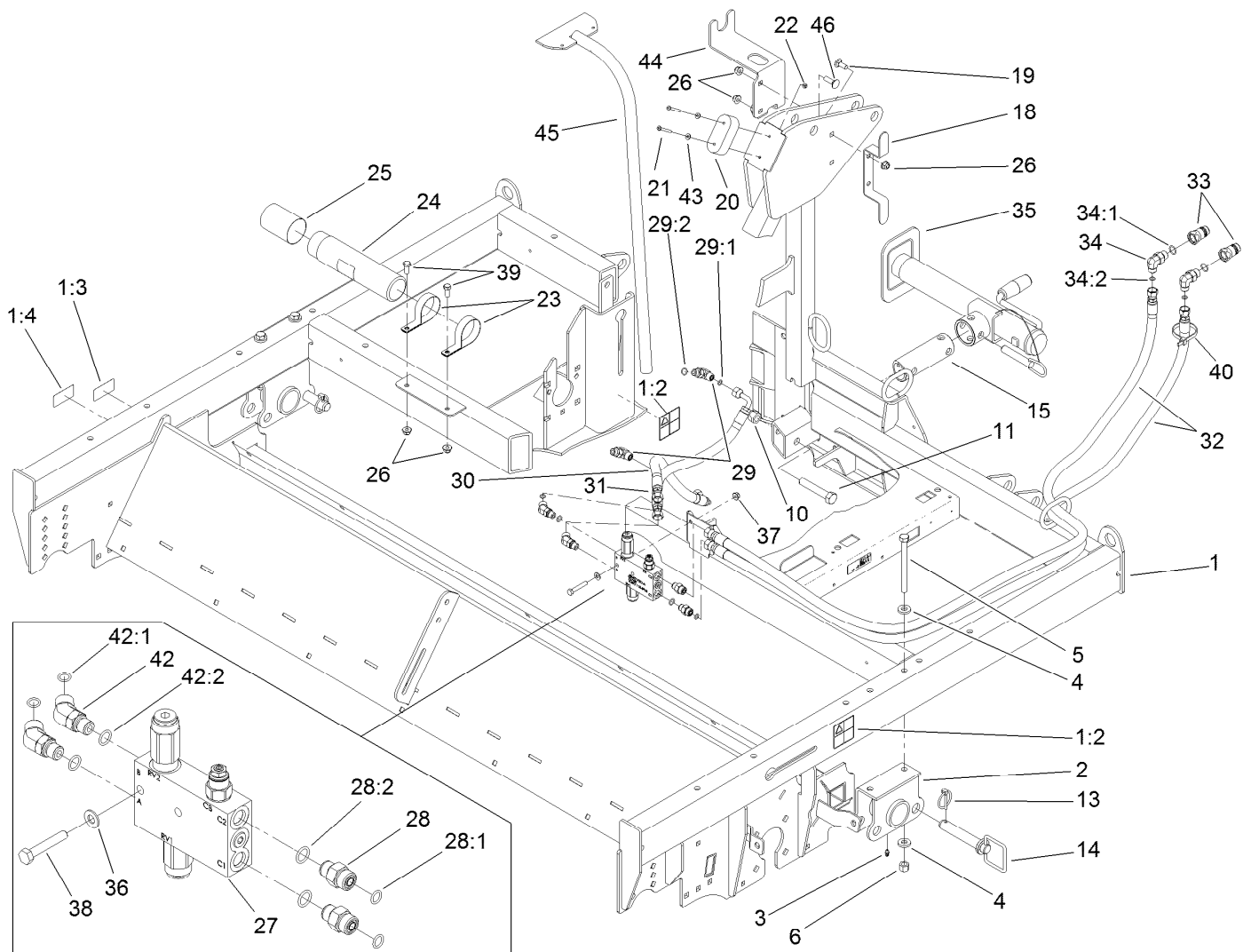
**STD:** standard

**TAP:** self tapping

**TTH:** torx truss head

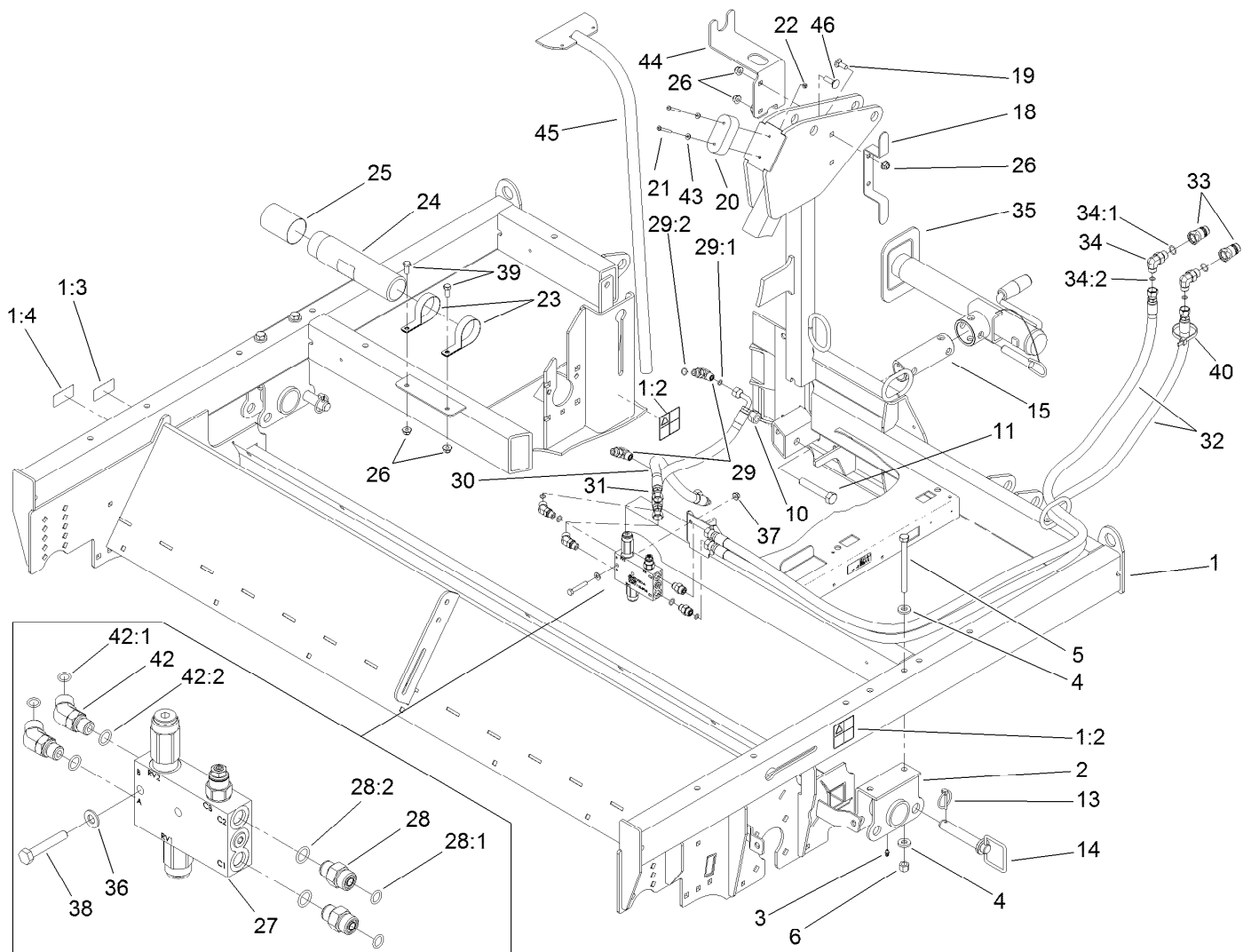
# Contents

Frame Assembly.....	4
Manifold Block Assembly No. 115-8961.....	6
Transport Assembly.....	7
Lift Axle Assembly No. 114-7746.....	8
Hydraulic Cylinder Assembly No. 105-7867.....	9
Chopper Housing Assembly.....	10
Chopper Assembly.....	11
Brush and Housing Assembly.....	12
Brush Assembly No. 112-4540.....	13
Roller Assembly.....	14
Electrical Assembly.....	15
Engine Assembly.....	16
Muffler Assembly No. 115-2923.....	18
Air Cleaner Assembly No. 114-7630.....	19
Belt Drive Assembly.....	20
Shield and Cover Assembly.....	22
Belt Tensioner Assembly.....	23
Fuel System Assembly.....	24
Attachments and Accessories.....	25



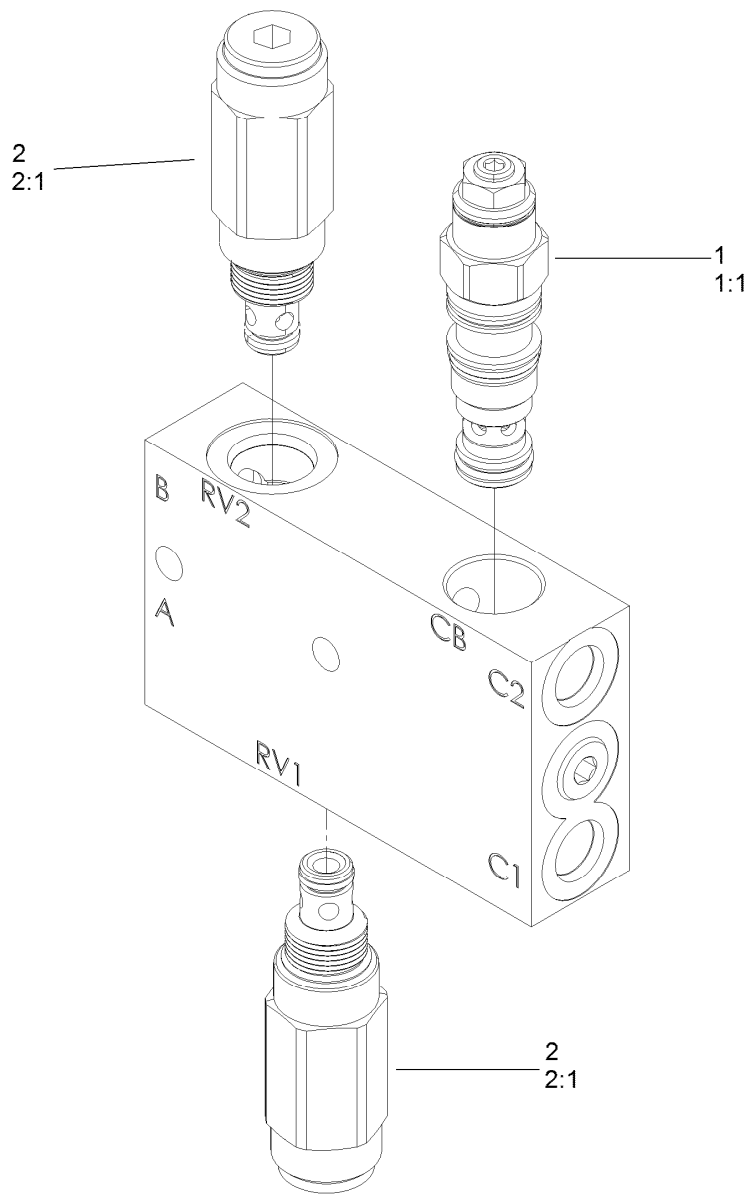
## Frame Assembly

Ref.	Part Number	Qty.	Description	Ref.	Part Number	Qty.	Description
1	114-7747	1	Frame ASM	25	104-7048	1	Cap-Housing
1:2	105-4586	2	Decal-Shield	26	104-8301	6	Nut-Flange, NI
1:3	112-4280	1	Decal-Warning, Ce	27	115-8961	1	Block-Manifold
1:4	112-4279	1	Decal-Warning, Shield (Ce)	28	340-2	2	Fitting-HYD, Straight
2	114-7686-01	2	Bearing Tube ASM	28:1	237-22	1	O-Ring
3	302-5	2	Fitting-Grease	28:2	237-42	1	O-Ring
4	107-3395	8	Washer-Hardened	29	340-77	2	Fitting-HYD, 90 DEG
5	325-22	4	Screw-HH	29:1	237-22	1	O-Ring
6	3296-23	4	Nut-Lock, NI	29:2	237-42	1	O-Ring
10	3296-53	1	Nut-Lock, NI	30	114-7703	1	HYD Hose ASM
11	327-14	1	Screw-HH	31	114-7704	1	HYD Hose ASM
13	92-1298	2	Pin-Lynch	32	114-7701	2	HYD Hose ASM
14	112-4378	2	Pin-Hitch	33	112-4413	2	Coupler-Quick
15	112-4512	1	Tube-Jack	34	340-18	2	Fitting-HYD, 90 DEG
18	106-0262-01	1	Mount-Harness	34:1	237-79	1	O-Ring
19	3231-2	2	Screw-CARR	34:2	237-22	1	O-Ring
20	110-2721	1	Stop	35	106-9699	1	Jack ASM
21	3250-48	2	Screw-PPH	36	3256-23	2	Washer-Flat
22	3296-12	2	Nut-Lock, NI	37	104-8300	2	Nut-Flange, NI
23	2412-133	2	R-Clamp	38	322-21	2	Screw-HH
24	104-7050	1	Tube-Manual	39	323-5	2	Screw-HH



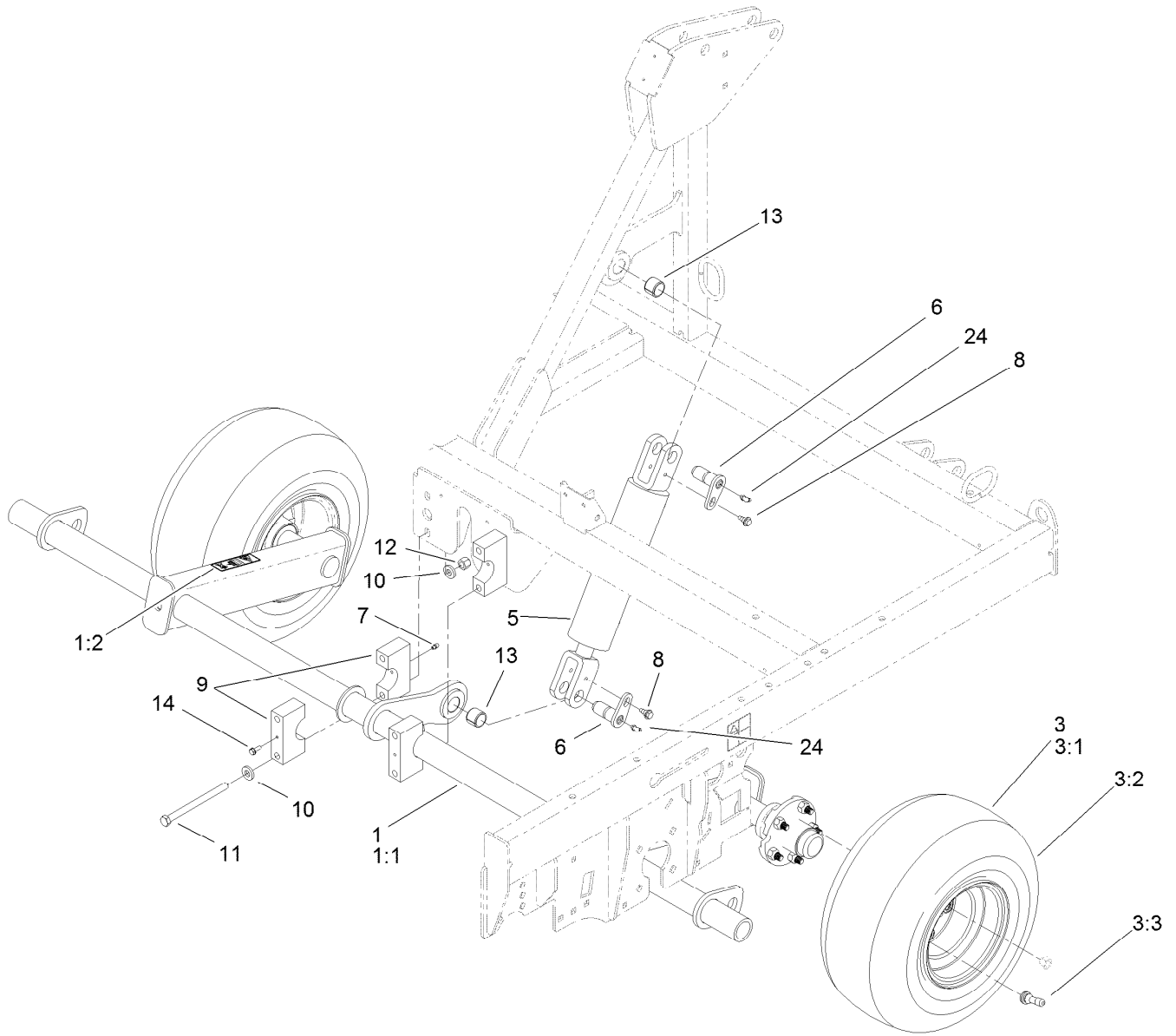
## Frame Assembly (continued)

<i>Ref.</i>	<i>Part Number</i>	<i>Qty.</i>	<i>Description</i>	<i>Ref.</i>	<i>Part Number</i>	<i>Qty.</i>	<i>Description</i>
40	3290-378	1	Tie-Cable	43	3256-14	2	Washer-Flat
42	340-87	2	Fitting-HYD, 45 DEG	44	115-8919-03	1	Mount-Plate
42:1	237-22	1	O-Ring	45	115-8915-03	1	Tool-Scraper
42:2	237-42	1	O-Ring	46	3231-25	2	Screw-CARR



## Manifold Block Assembly No. 115-8961

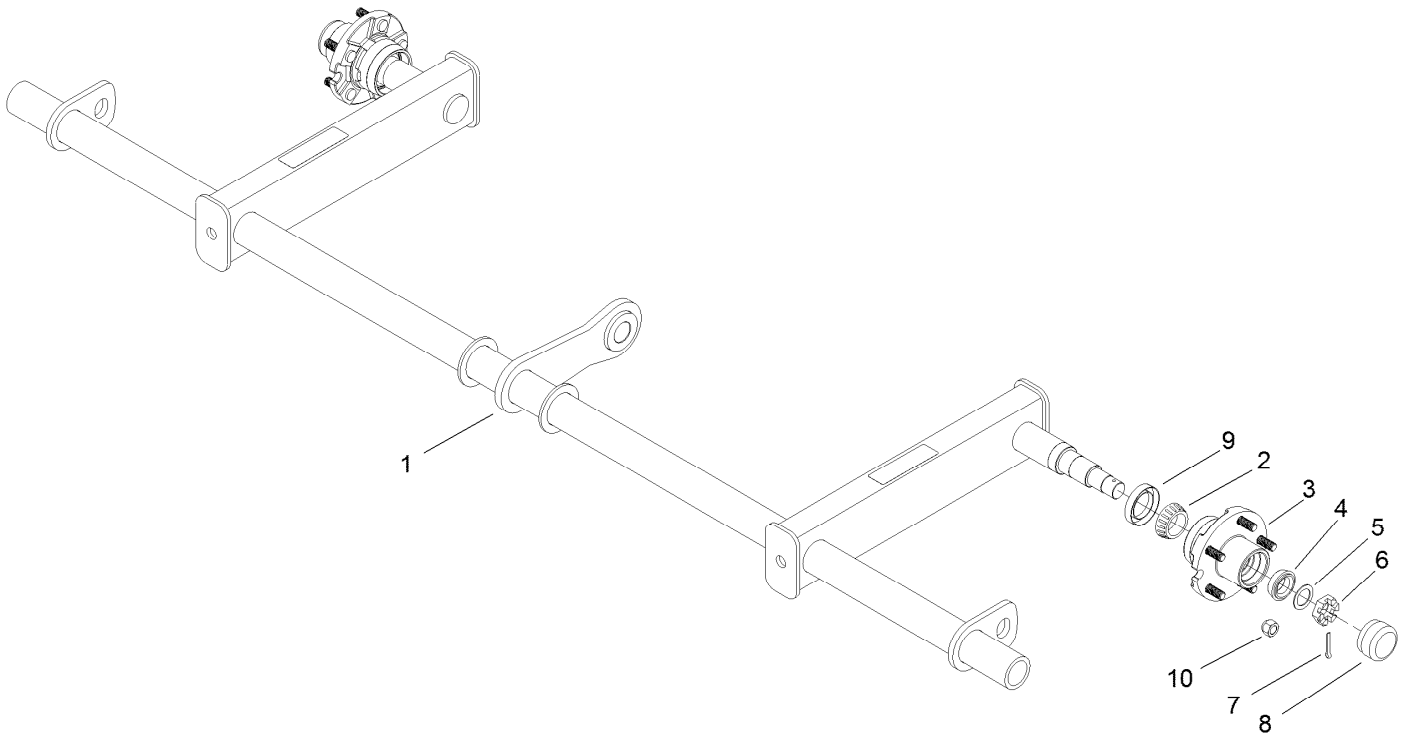
<i>Ref.</i>	<i>Part Number</i>	<i>Qty.</i>	<i>Description</i>
1	105-9155	1	Valve-Relief
1:1	105-9156	1	Seal Kit
2	115-9037	2	Relief
2:1	114-5083	1	Seal Kit



## Transport Assembly

Ref.	Part Number	Qty.	Description	Ref.	Part Number	Qty.	Description
1	114-7746	1	Lift Axle ASM	7	302-5	2	Fitting-Grease
1:1		1	Axle-Lift ●	8	99-5105	2	Bolt-Shoulder
1:2	114-7774	2	Decal-Warning, Pinch Point	9	110-2787	4	Block-Axle
3	114-7740	2	Wheel And Tire ASM	10	107-3395	8	Washer-Hardened
3:1	114-7741	1	Tire	11	325-33	4	Screw-HH
3:2	114-7742	1	Rim	12	3296-23	4	Nut-Lock, NI
3:3	232-27	1	Stem-Valve	13	98-4871	2	Bushing-Tension
5	105-7867	1	HYD Cylinder ASM	14	32140-94	2	Screw-HH, Sems
6	98-2654	2	Pivot Pin ASM	24	302-40	2	Fitting-Grease

● Not serviced separately

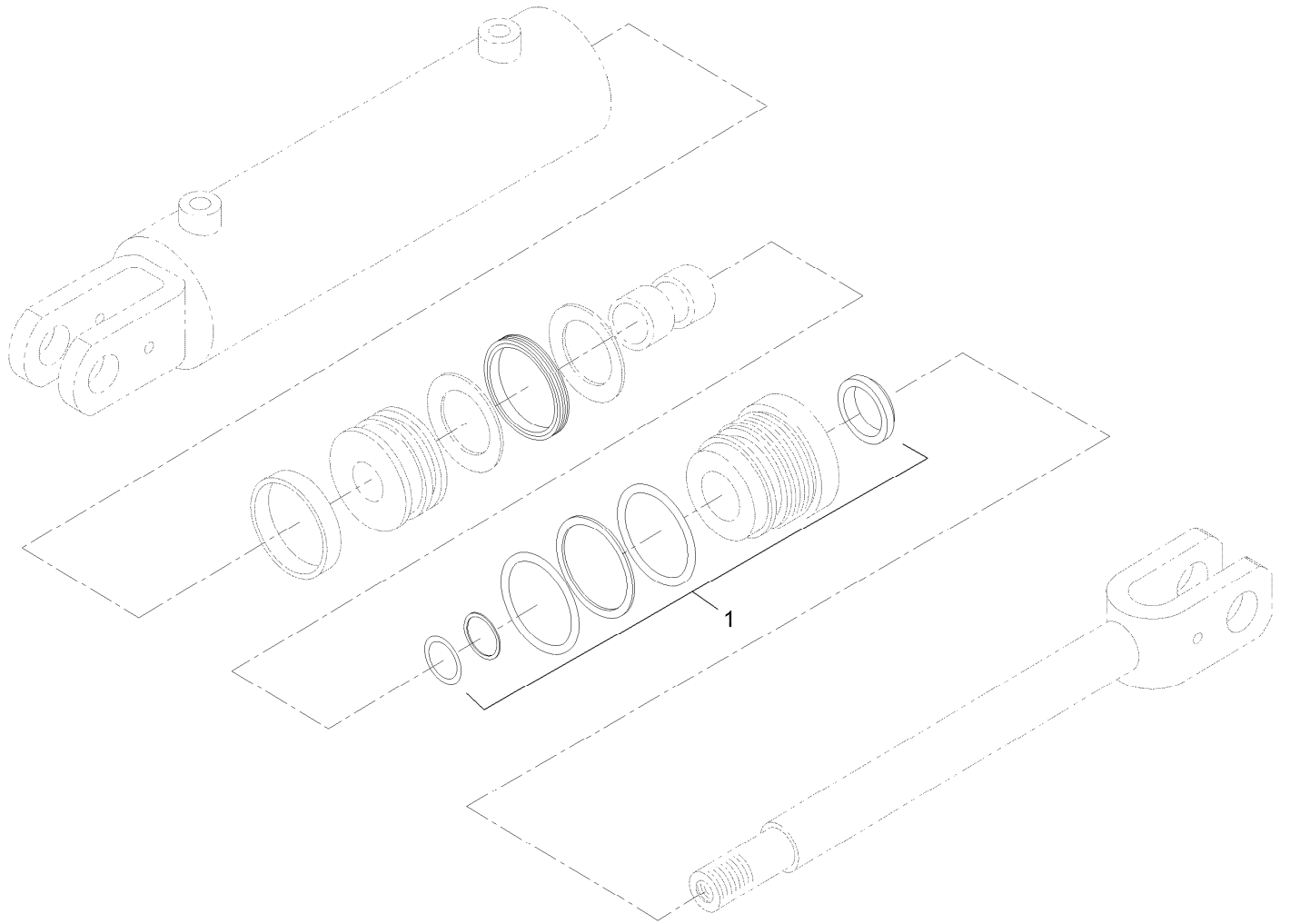


## Lift Axle Assembly No. 114-7746

<i>Ref.</i>	<i>Part Number</i>	<i>Qty.</i>	<i>Description</i>
1		1	Lift Axle ASM ●
2	254-106	2	Cone-Bearing, Tapered
3	114-3908	2	Hub ASM
4	99-4501	2	Cone-Bearing
5	10-8110	2	Washer-Thrust
6	99-4508	2	Nut-Castle
7	3272-22	2	Pin-Cotter
8	108-0693	2	Cap-Grease
9	69-2980	2	Seal
10	242-50	10	Nut-Lug

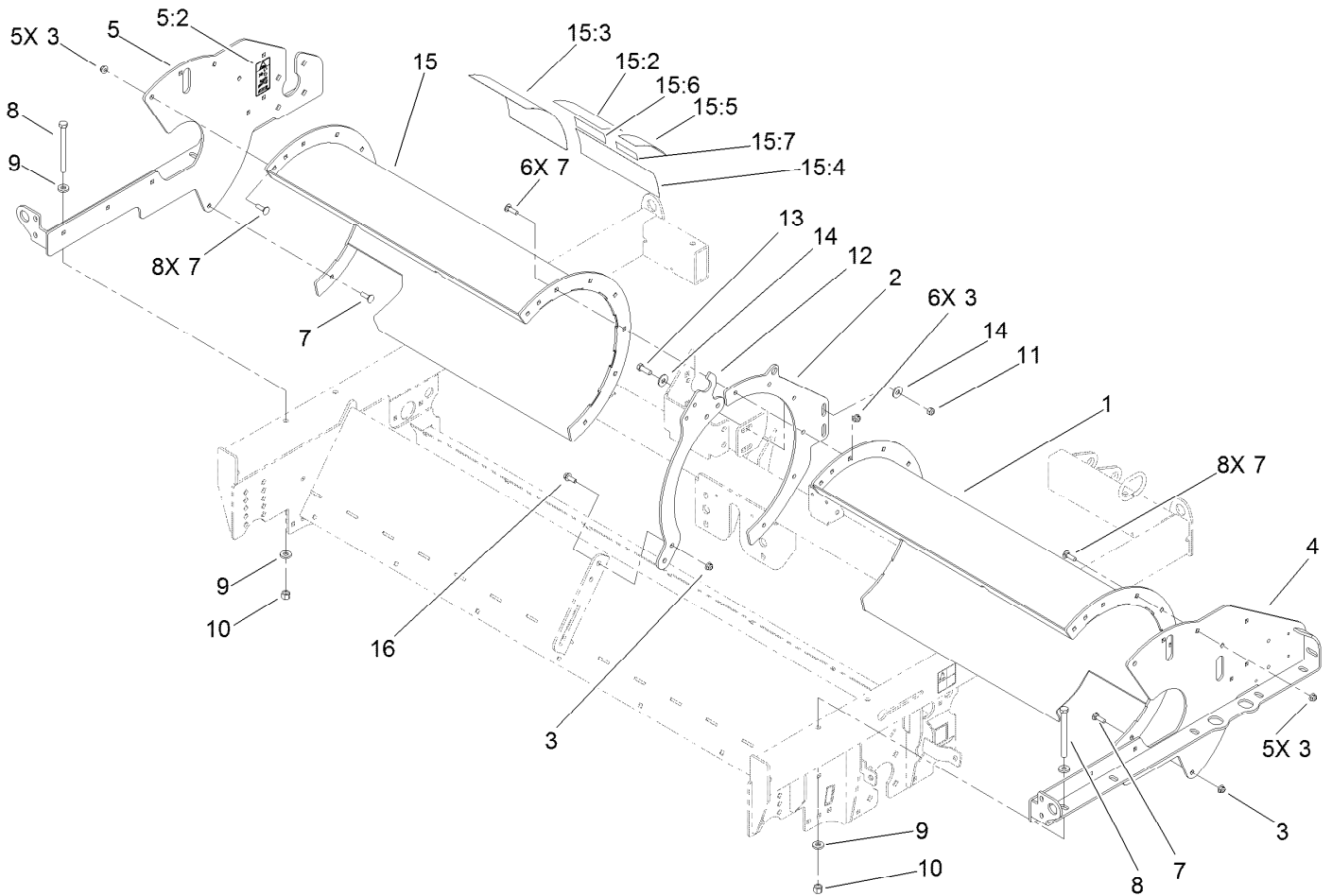
● Not serviced separately





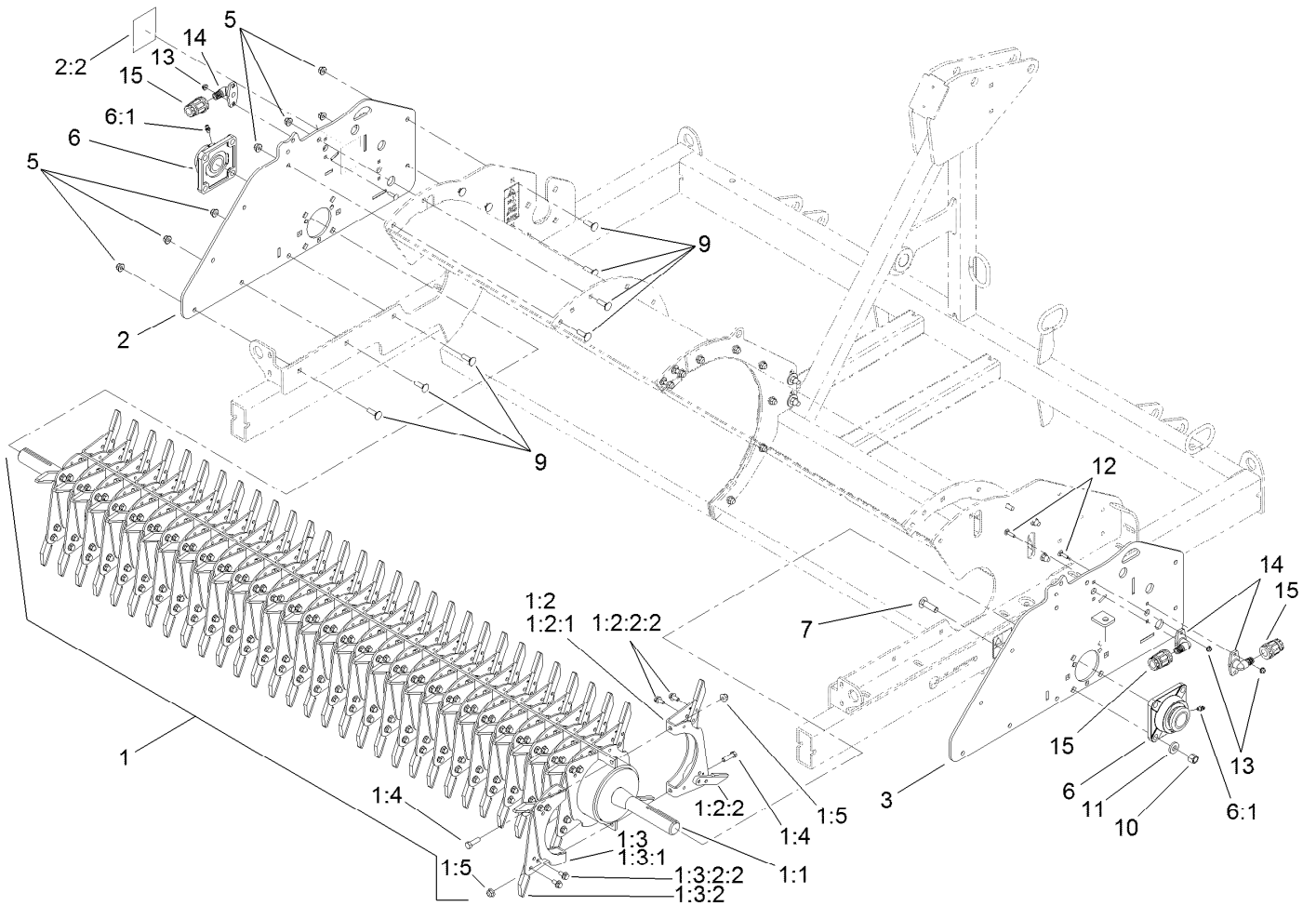
## Hydraulic Cylinder Assembly No. 105-7867

<i>Ref.</i>	<i>Part Number</i>	<i>Qty.</i>	<i>Description</i>
1	105-8356	1	Seal Kit



## Chopper Housing Assembly

Ref.	Part Number	Qty.	Description	Ref.	Part Number	Qty.	Description
1	114-7680-03	1	Chopper-Housing	13	324-29	2	Bolt-HH
2	112-4488-03	1	Support-Housing, Center	14	94-2701	4	Washer-Hardened
3	104-8301	18	Nut-Flange, NI	15	114-7743	1	Chopper Housing ASM
4	114-7683-01	1	RH Support ASM	15:2	112-4276	1	Decal-Danger, Processor
5	114-7789	1	LH Support ASM	15:3	110-2701	1	Decal-Danger, Stored Energy
5:2	112-4284	1	Decal-Danger, Entanglement	15:4	114-7775	1	Decal-Danger, Processor
7	3231-25	16	Screw-CARR	15:5	112-4283	1	Decal-Warning, Remove Key
8	325-22	10	Screw-HH	15:6	112-4270	1	Decal-Brush Housing
9	107-3395	20	Washer-Hardened	15:7	117-2718	1	Decal-Arrester, Spark
10	3296-23	10	Nut-Lock, NI	16	3234-42	2	Screw-HHF
11	3296-76	2	Nut-Lock, NI				
12	114-7655-03	1	Ring-Reinforcing				



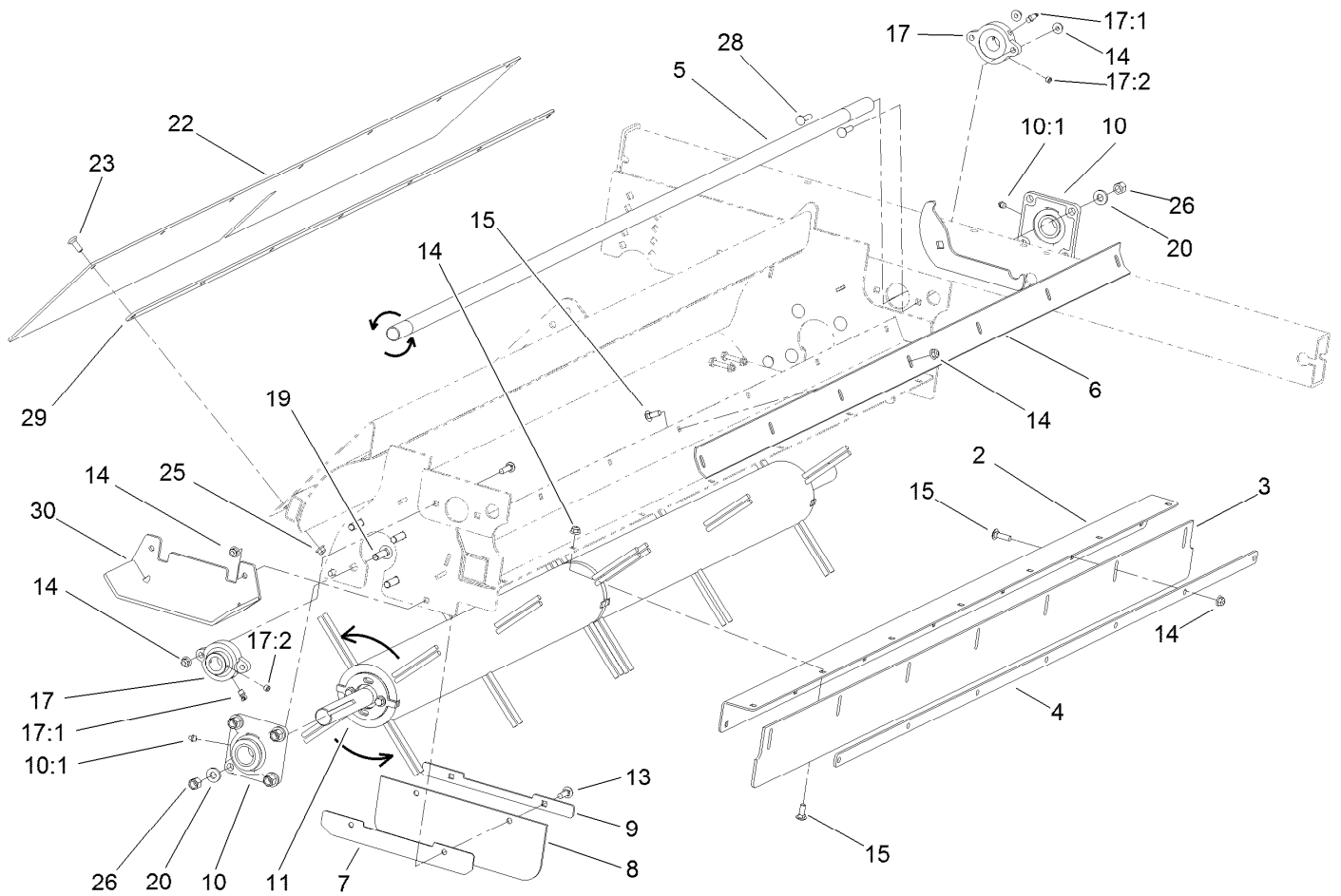
## Chopper Assembly

Ref.	Part Number	Qty.	Description
1		1	Chopper-Rotator ■
1:1	114-7606	1	Chopper-Axle ASM
1:2		31	Blade-RH ■
1:2:1	114-7614	1	Blade-Bent
1:2:2	110-2730	2	Tip-Chopper ASM
1:2:2:2	114-7728	2	Screw-Threadlock
1:3		31	Blade-LH ■
1:3:1	114-7614	1	Blade-Bent
1:3:2	110-2730	2	Tip-Chopper ASM
1:3:2:2	114-7728	2	Screw-Threadlock
1:4	323-7	62	Screw-HH
1:5	104-8301	62	Nut-Flange, NI
2	114-7744	1	Plate-End
2:2	105-4586	1	Decal-Shield

Ref.	Part Number	Qty.	Description
3	114-7652-01	1	Endplate ASM
5	104-8301	14	Nut-Flange, NI
6	114-3937	2	Bearing
6:1	302-52	1	Fitting-Grease
6:2	110-2735	1	Indicator-Torque ●
6:3	110-2736	1	Wrench-Allen ●
7	3233-14	8	Screw-CARR
9	3231-25	14	Screw-CARR
10	3296-23	8	Nut-Lock, NI
11	107-3395	8	Washer-Hardened
12	3229-2	6	Screw-CARR
13	104-7201	6	Nut-HF
14	95-2747	3	Fitting-Washout
15	95-3270	3	Connector-Hose

● Not illustrated

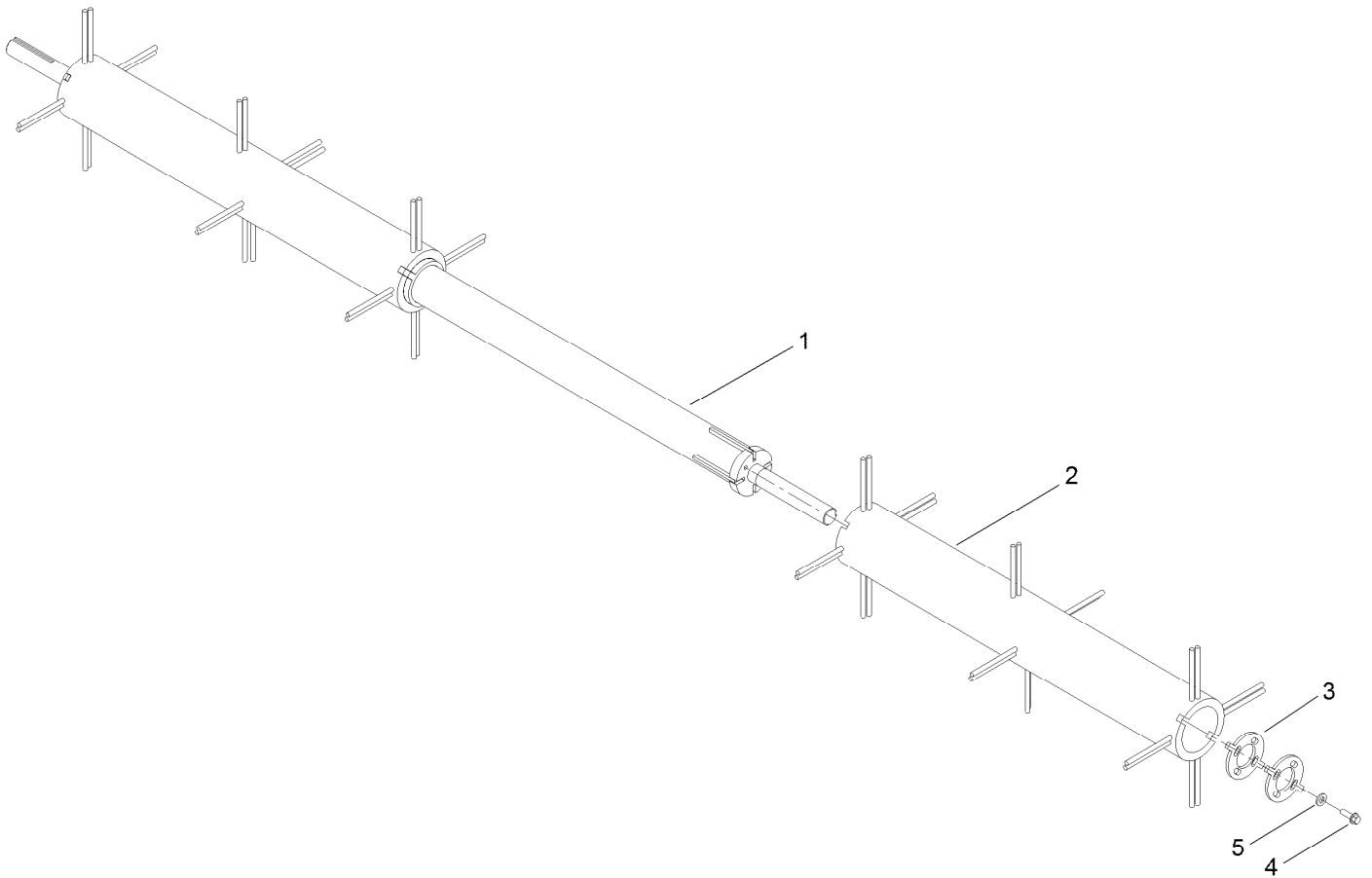
■ Not serviced separately



## Brush and Housing Assembly

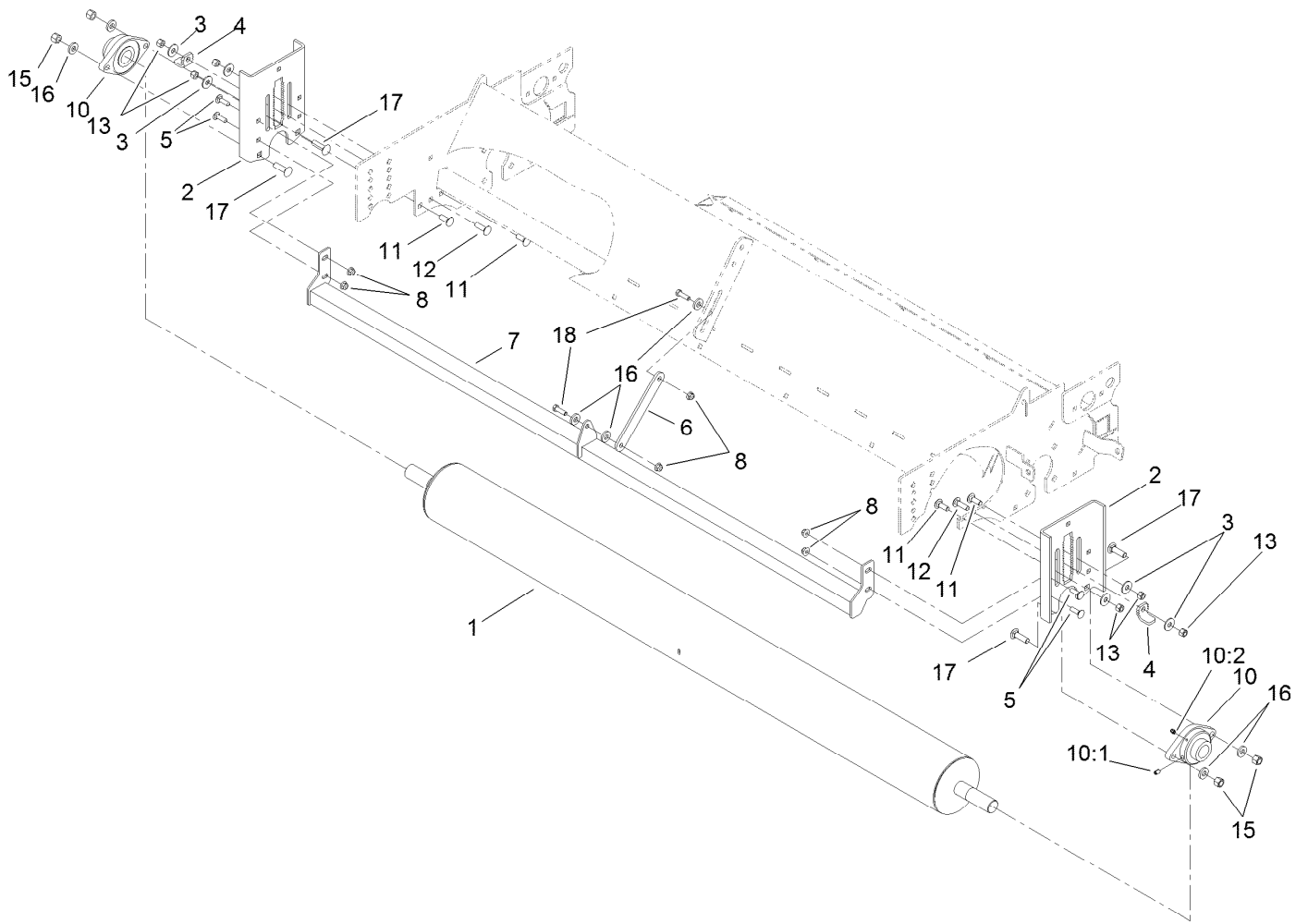
Ref.	Part Number	Qty.	Description	Ref.	Part Number	Qty.	Description
2	110-2884-01	1	Angle-Front	14	104-8301	29	Nut-Flange, NI
3	110-2885	1	Shield-Rubber, Front	15	3231-2	21	Screw-CARR
4	110-2887-03	1	Plate-Skirt, Front	17	114-7667	2	Bearing
5	114-3945	1	Shaft-Corner	17:1	302-33	1	Fitting-Grease
6	110-2983-01	1	Plate-Scraper	17:2	3246-17	1	Setscrew-HSH
7	110-2888	2	Plate-Angle	19	3233-14	8	Screw-CARR
8	110-2948	2	Shield-Rubber, Side	20	107-3395	8	Washer-Hardened
9	110-2949	2	Plate-Skirt, Side	22	114-3851	1	Cover-Scraper, Rubber
10	114-3937	2	Bearing	23	3274-63	7	Screw-HSBH
10:1	302-52	1	Fitting-Grease	25	105-4886	7	Nut-Tinnerman
10:2	110-2735	1	Indicator-Torque ●	26	3296-23	8	Nut-Lock, NI
10:3	110-2736	1	Wrench-Allen ●	28	3231-4	4	Screw-CARR
11	112-4540	1	Brush ASM	29	114-7668-03	1	Plate-Skirt, Rear
13	3231-4	4	Screw-CARR	30	115-2931-03	1	Plate-Skid

● Not illustrated



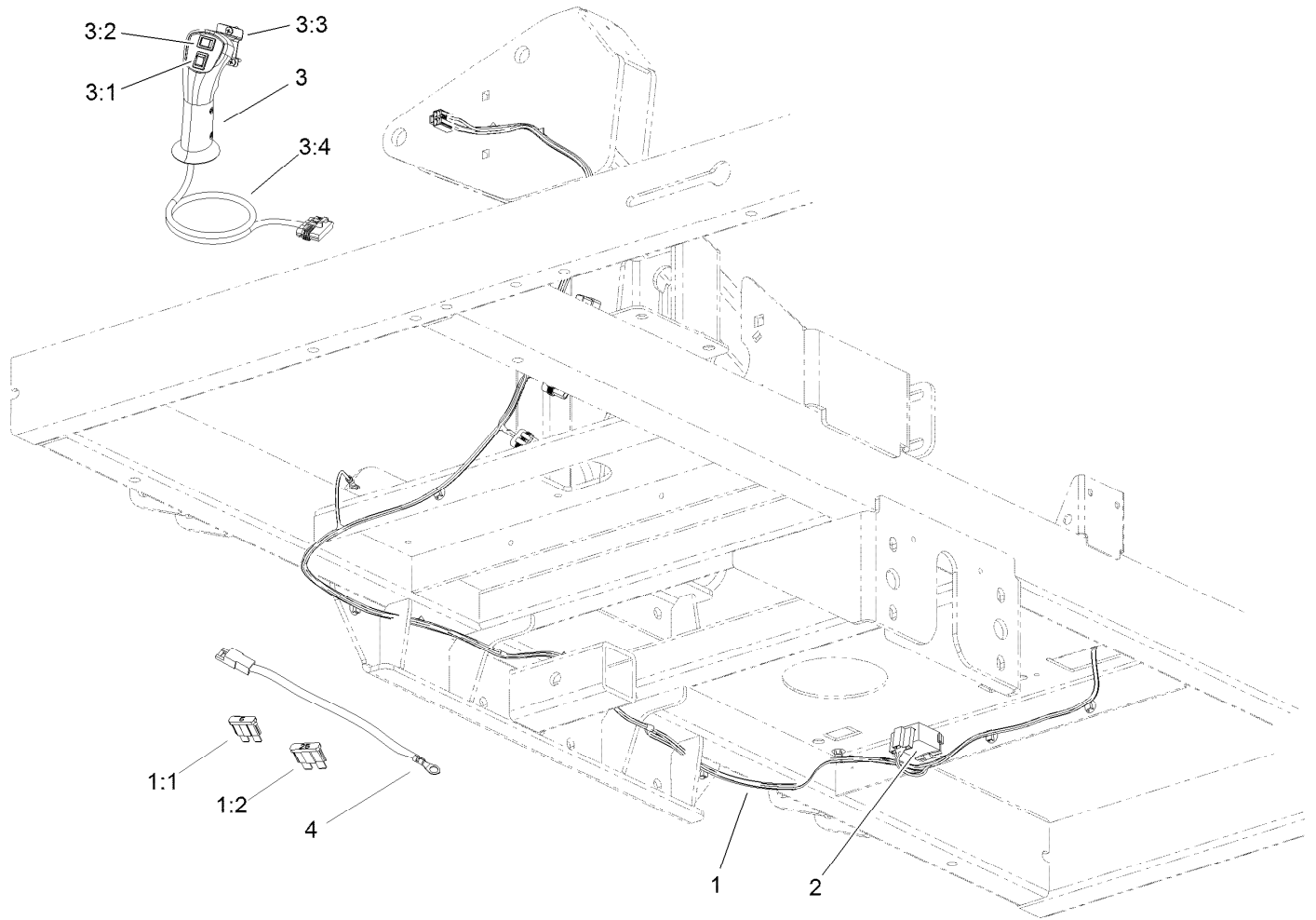
## Brush Assembly No. 112-4540

<i>Ref.</i>	<i>Part Number</i>	<i>Qty.</i>	<i>Description</i>
1	114-7715	1	Axle-Brush
2	110-2908	2	Brush-Sweeper
3	110-3008	4	Drive-Brush
4	323-44	4	Screw-HH
5	80-6990	4	Washer-Hardened



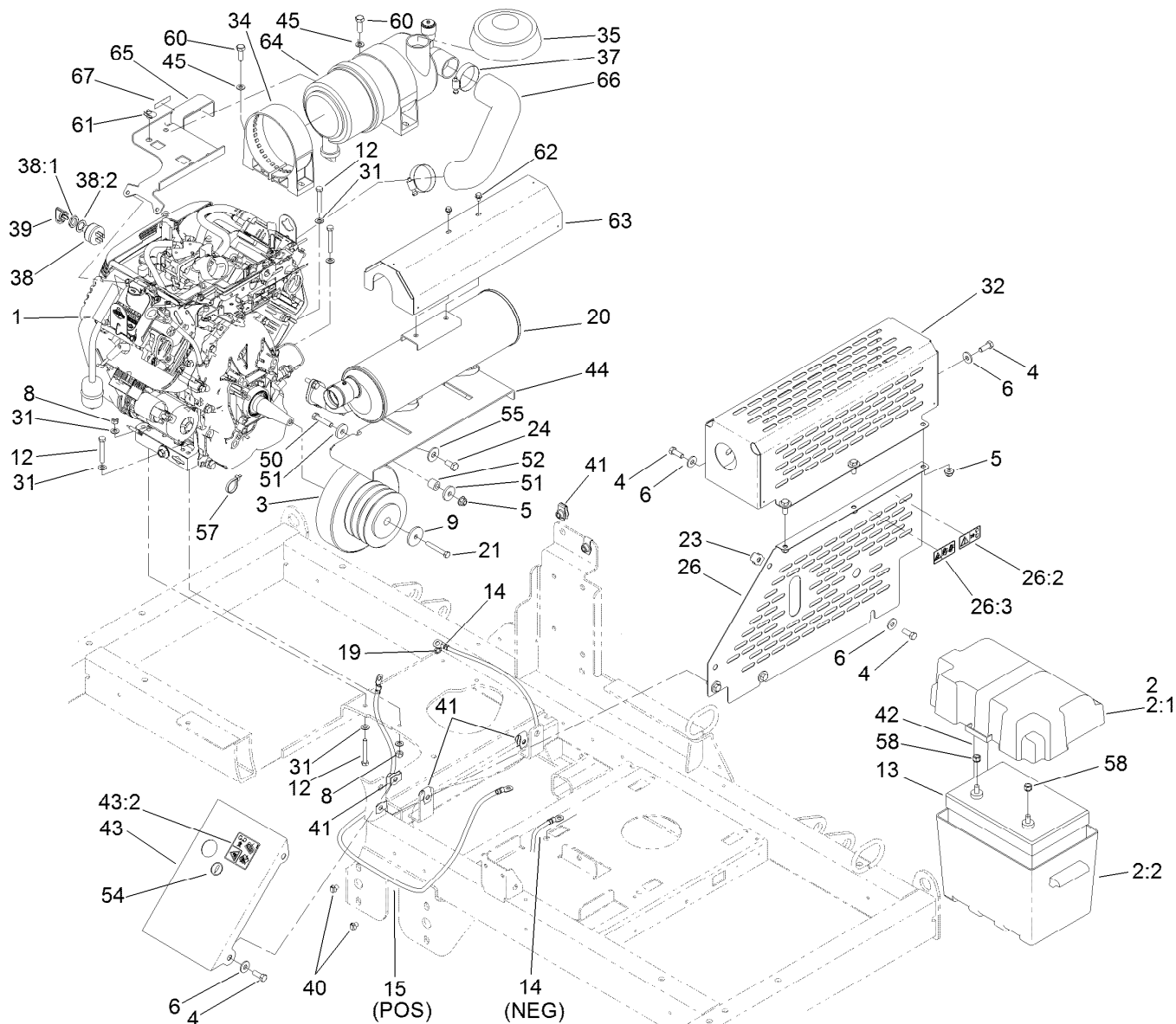
## Roller Assembly

<i>Ref.</i>	<i>Part Number</i>	<i>Qty.</i>	<i>Description</i>	<i>Ref.</i>	<i>Part Number</i>	<i>Qty.</i>	<i>Description</i>
1	114-7697-03	1	Roller ASM	10:1	3246-17	1	Setscrew-HSH
2	114-7693-01	2	Plate-Adjuster	10:2	302-5	1	Fitting-Grease
3	94-2701	6	Washer-Hardened	11	3232-2	4	Bolt-CARR
4	114-7692	2	Key-Adjuster, Bent	12	3232-3	2	Screw-CARR
5	3231-25	4	Screw-CARR	13	3296-48	6	Nut-Lock, NI
6	112-4583-01	1	Strap-Connector	15	3296-23	4	Nut-Lock, NI
7	114-7696-03	1	Scraper-Roller	16	107-3395	7	Washer-Hardened
8	104-8301	6	Nut-Flange, NI	17	3233-14	4	Screw-CARR
10	105-0962	2	Bearing-Mount, Flange	18	323-7	2	Screw-HH



## Electrical Assembly

<i>Ref.</i>	<i>Part Number</i>	<i>Qty.</i>	<i>Description</i>
1	112-3535	1	Harness-Wire, Main
1:1	218-578	1	Fuse-Blade, 10 Amp
1:2	109102	1	Fuse-Blade, 25 Amp
2	1-513374	1	Meter-Hour
3	112-4585	1	Handle-Control
3:1	114-7796	1	Switch-Rocker, On-Off
3:2	114-3352	1	Switch-Rocker, On-Off
3:3	114-7781	1	Hanger Clip ASM
3:4	112-3539	1	Harness-Wire, Remote Handle
4	108-9455	1	Harness-Wire, Fusible Link



## Engine Assembly

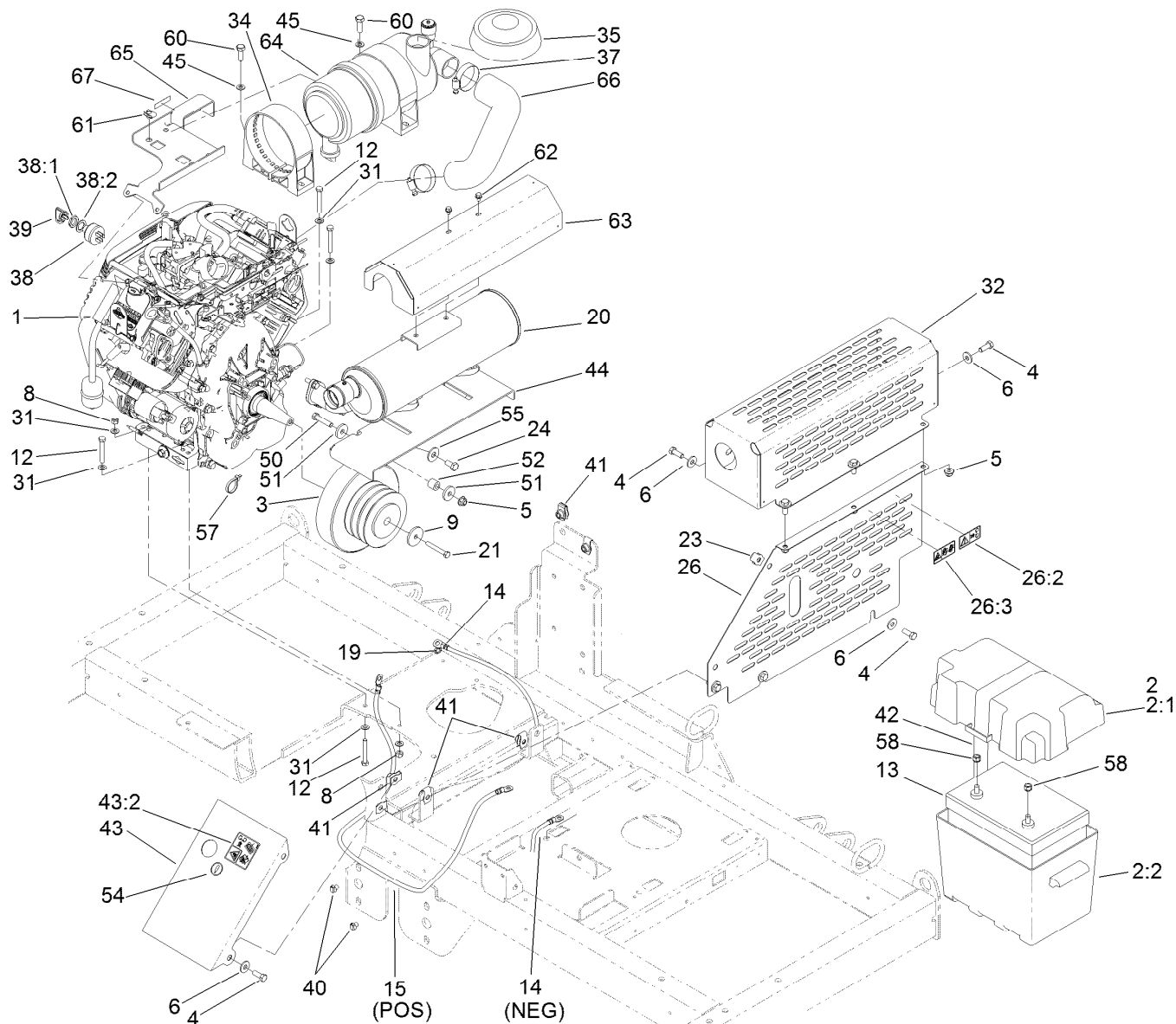
Ref.	Part Number	Qty.	Description
1		1	Engine-Briggs & Stratton, 6134771194E1 ●■
2	93-7595	1	Battery Box ASM
2:1	105-2914	1	Top-Battery Box
2:2	105-2915	1	Bottom-Battery Box
3	114-7721	1	Clutch-Centrifugal, 3 Groove
4	323-6	12	Screw-HH
5	104-8301	4	Nut-Flange, NI
6	80-6990	12	Washer-Hardened
8	3296-29	4	Nut-Lock, NI
9	80-8560	1	Washer-Hardened
12	322-32	4	Screw-HH
13	108-1260	1	Battery-Dry
14	114-7780	1	Cable-Battery, Negative
15	114-9408	1	Cable-Battery, Positive
19	3254-2	1	Washer-Lock, Internal
20	115-2923	1	Muffler ASM
21	114-7726	1	Screw-HH

Ref.	Part Number	Qty.	Description
23	105-4886	1	Nut-Tinnerman
24	324-2	2	Screw-HH
26	114-7748	1	Guard-Belt, Clutch
26:2	112-4280	1	Decal-Warning, Ce
26:3	112-4279	1	Decal-Warning, Shield (Ce)
31	94-6936	8	Washer-Hardened
32	114-7675-03	1	Guard-Muffler
34	98-4525	1	Bracket-Cleaner, Air
35	105-2539	1	Cap ASM
37	2412-92	2	Clamp-Hose
38	83-0020	1	Switch-Ignition
38:1	218-461	1	Nut-HH
38:2	3254-5	1	Washer-Tooth, Internal
39	63-8360	2	Key-Ignition
40	32180-030	4	Clip-Harness
41	112-4576	7	Nut-Clip, U
42	3339-175	1	Strapping-Web, 48 Inch
43	114-7766	1	Cover-Belt
43:2	112-4281	1	Decal-Warning, Shield (Ce)

● Not serviced separately

■ Obtain parts from [www.briggsandstratton.com](http://www.briggsandstratton.com)





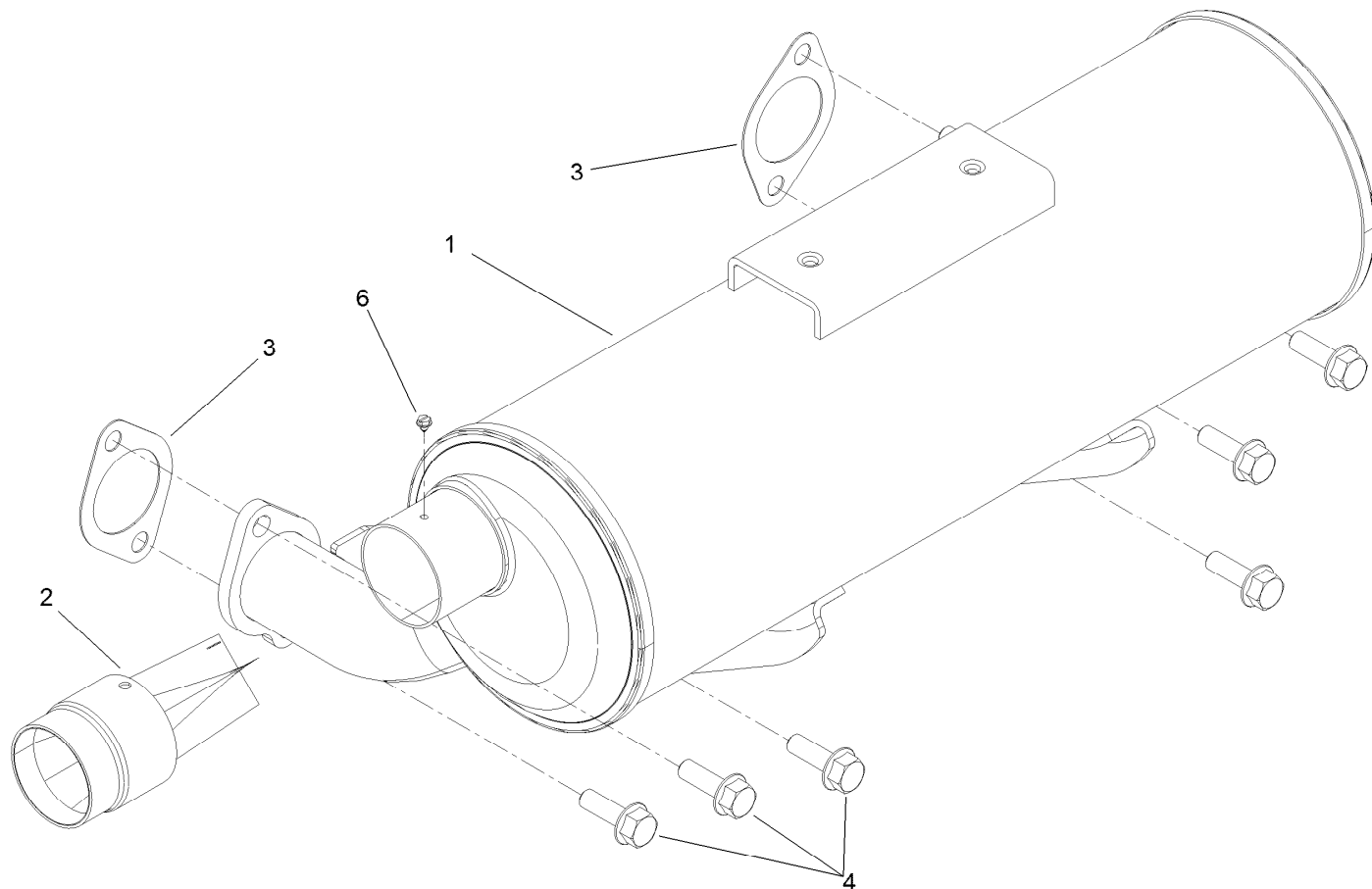
## Engine Assembly (continued)

Ref.	Part Number	Qty.	Description
44	112-4527-03	1	Mount-Muffler
45	3256-23	4	Washer-Flat
50	323-9	1	Screw-HH
51	53-6380	2	Washer-Flat
52	98-8895	1	Spacer
54	58-6520	1	Decal-Grease
55	94-2701	2	Washer-Hardened
57	3290-378	1	Tie-Cable
58	32149-10	2	Nut-Keps

Ref.	Part Number	Qty.	Description
60	33114-030	4	Screw-HH
61	112-4295	2	Nut-Tinnerman
62	81-1280	2	Screw-HHF
63	110-2738-03	1	Heat-Shield
64	114-7630	1	Air Cleaner Assembly
65	115-2924-03	1	Plate-Mount Filter
66	115-2950	1	Hose-Air Intake
67	115-2939	1	Decal-Throttle

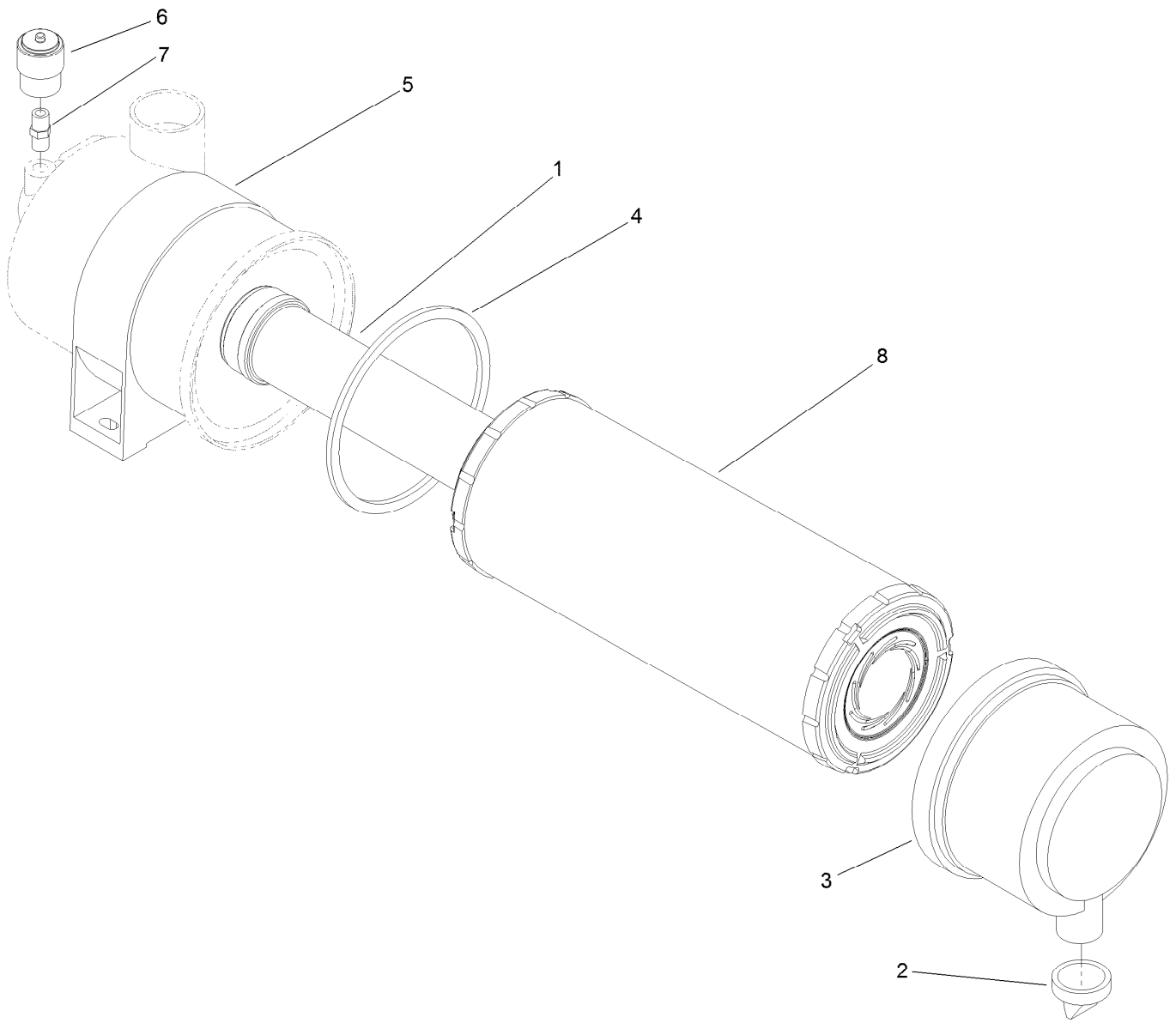
● Not serviced separately

■ Obtain parts from [www.briggsandstratton.com](http://www.briggsandstratton.com)



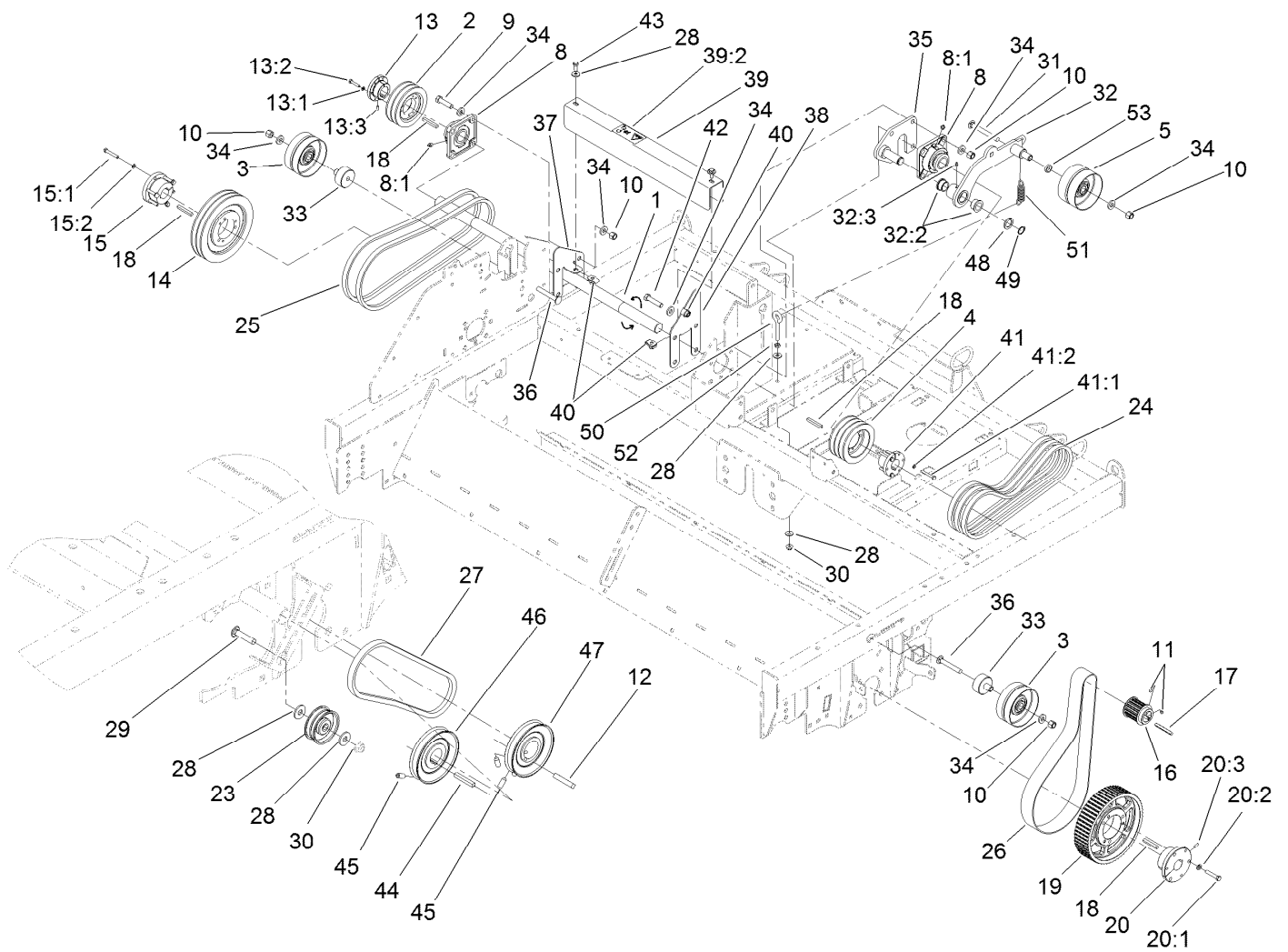
## Muffler Assembly No. 115-2923

<i>Ref.</i>	<i>Part Number</i>	<i>Qty.</i>	<i>Description</i>
1	114-3929	1	Muffler
2	115-2919	1	Arrestor-Spark
3	115-2918	2	Gasket-Muffler
4	33104-025	6	Screw-HHF
6	115-8903	1	Screw



## Air Cleaner Assembly No. 114-7630

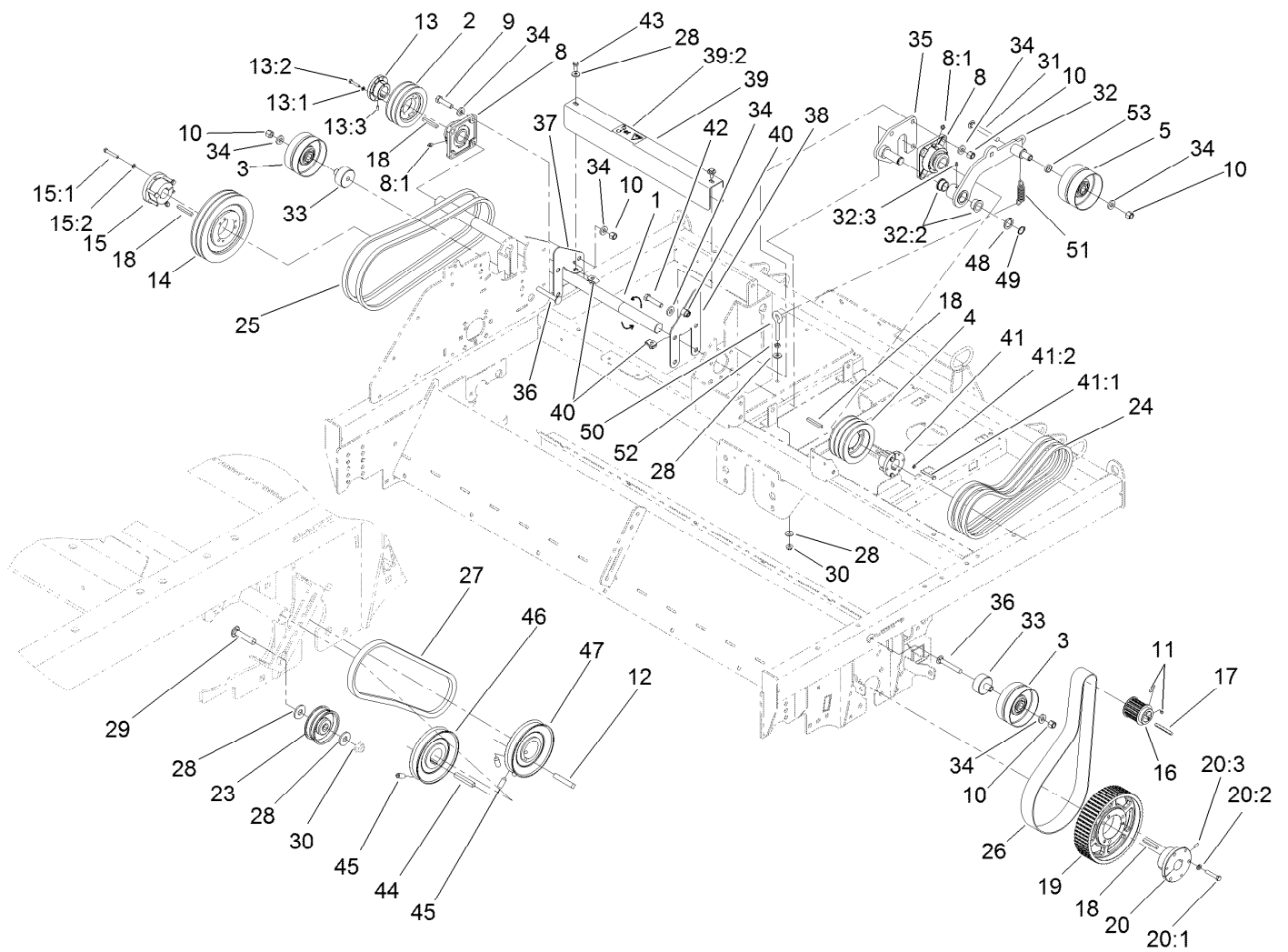
<i>Ref.</i>	<i>Part Number</i>	<i>Qty.</i>	<i>Description</i>
1	114-4057	1	Element-Safety, 5 Inch
2	104-0498	1	Valve-Vacuator
3	104-0497	1	Cover ASM
4	104-4897	1	Gasket
5	98-4525	1	Bracket-Cleaner, Air
6	93-9164	1	Indicator-Mini
7	105-4292	1	Nipple-Pipe
8	108-3810	1	Filter-Air



## Belt Drive Assembly

Ref.	Part Number	Qty.	Description	Ref.	Part Number	Qty.	Description
1	110-2774	1	Shaft-Jack	15:1	322-10	3	Screw-HH
2	110-2773	1	Pulley	15:2	3253-4	3	Washer-Lock
3	100-7631	2	Pulley-Idler	16	112-4371	1	Pulley-Timed, 15 Tooth
4	114-7722	1	Pulley	17	59-4210	1	Key-Square
5	117-8398	1	Pulley-Idler, Flat	18	83-004-0441	4	Key-Shaft, Gearbox
8	114-3937	2	Bearing	19	110-2979	1	Pulley-Cog, 60T
8:1	302-52	1	Fitting-Grease	20	110-2989	1	Bushing ASM
8:2	110-2735	1	Indicator-Torque ●	20:1	323-10	3	Screw-HH
8:3	110-2736	1	Wrench-Allen ●	20:2	3253-21	3	Washer-Lock
9	325-8	4	Screw-HH	20:3	92-9097	1	Screw-Hs
10	3296-23	11	Nut-Lock, NI	23	3-4244	1	Pulley-Idler
11	1-803322	2	Screw-Set	24	110-2772	1	Belt-B Section/Set Of 3
12	01-267-0320	1	Key	25	115-8957	1	Belt-B-Sect. Match Set Of 2
13	110-2778	1	Bushing ASM	26	112-4254	1	Belt-Timed
13:1	3253-3	3	Washer-Lock	27	115-2951	1	Belt-A Section
13:2	321-13	3	Screw-HH	28	80-6990	6	Washer-Hardened
13:3	3245-9	1	Screw-Set	29	3231-29	1	Screw-CARR
14	110-2875	1	Pulley	30	104-8301	2	Nut-Flange, NI
15	106-0358	1	Pulley Bushing ASM	31	3233-7	1	Screw-CARR

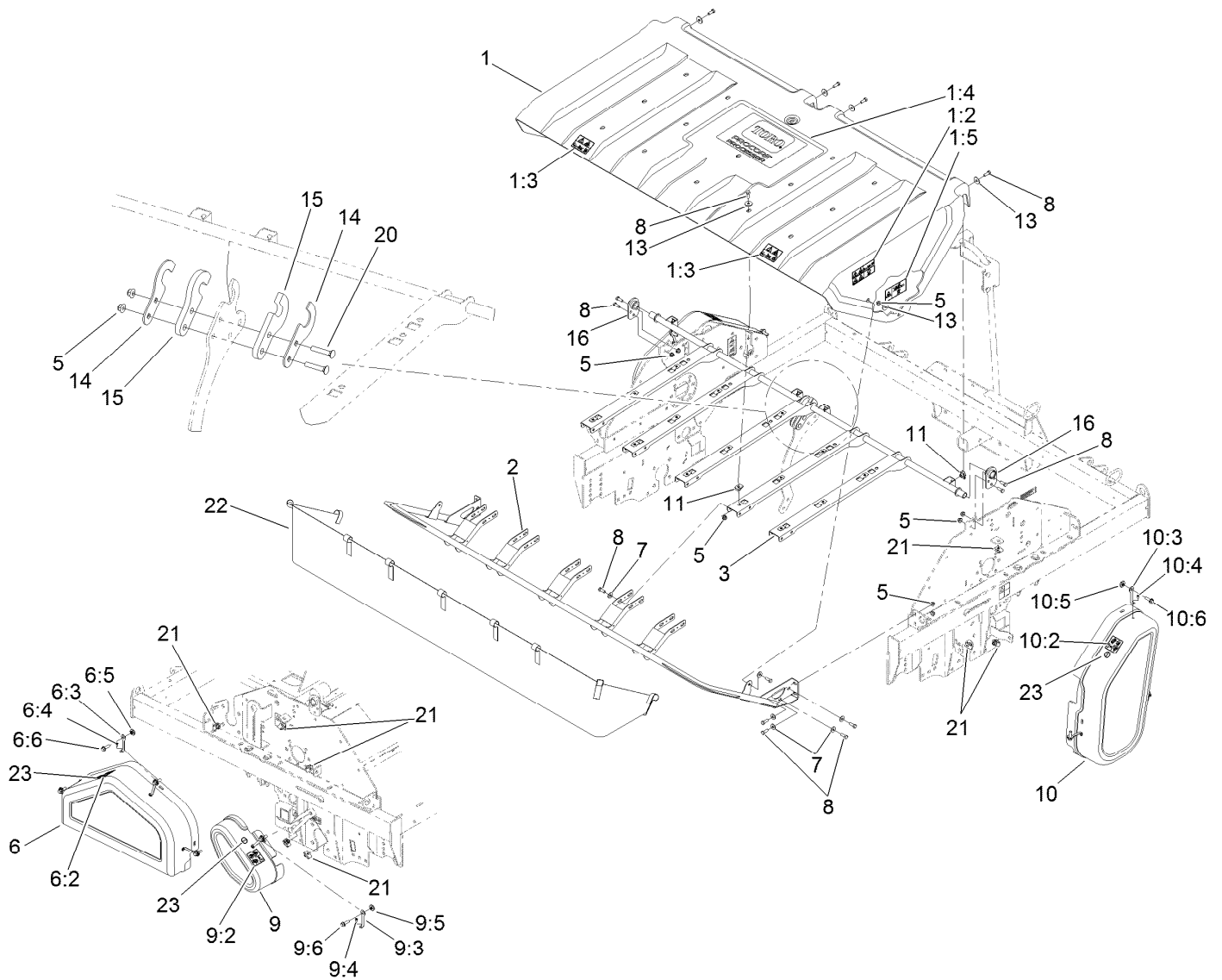
● Not illustrated



## Belt Drive Assembly (continued)

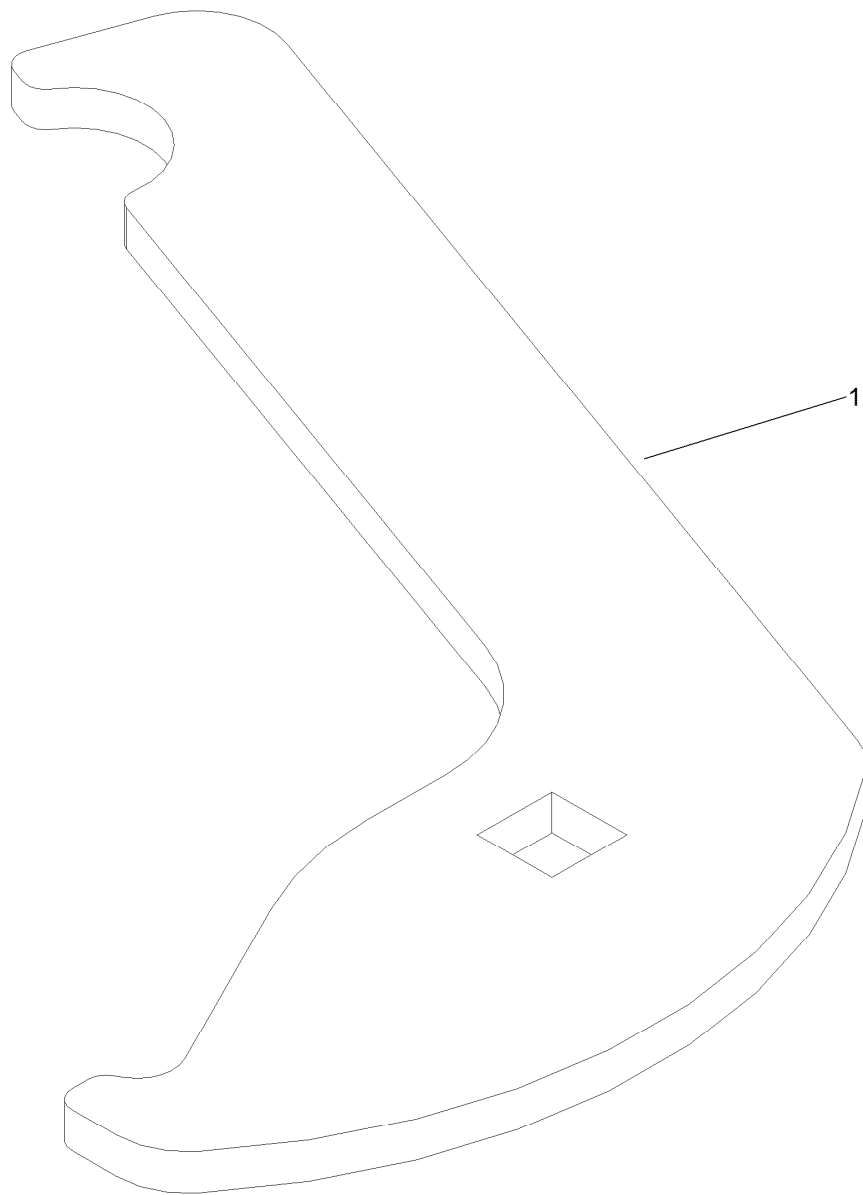
Ref.	Part Number	Qty.	Description	Ref.	Part Number	Qty.	Description
32	110-2717	1	Arm-Idler, ASM	41:2	3253-3	3	Washer-Lock
32:2	114-5680	2	Bushing-Flange	42	325-9	4	Screw-HH
32:3	302-5	1	Fitting-Grease	43	323-5	2	Screw-HH
33	114-3919	2	Standoff	44	7-0238	1	Key-Square
34	107-3395	19	Washer-Hardened	45	3246-6	4	Screw-Set, HSH
35	110-2710-03	1	Pivot-Idler	46	115-2913	1	Pulley-Split
36	3233-10	2	Screw-CARR	47	115-2912	1	Pulley-Split
37	114-7677-01	1	Mount-Cover, LH	48	3-8514	1	Washer-Thrust
38	114-7678-01	1	Mount-Cover, RH	49	32151-36	1	Ring-Retaining
39	114-7670	1	Cover-Jackshaft	50	94-2547	1	Bolt-Eye
39:2	112-4275	1	Decal-Danger, Stay Clear	51	54-2730	1	Spring-Extension
40	105-4886	3	Nut-Tinnerman	52	3217-7	1	Nut-Hex
41	106-0360	1	Pulley Bushing ASM	53	105-3828	1	Spacer
41:1	321-11	3	Screw-HH				

● Not illustrated



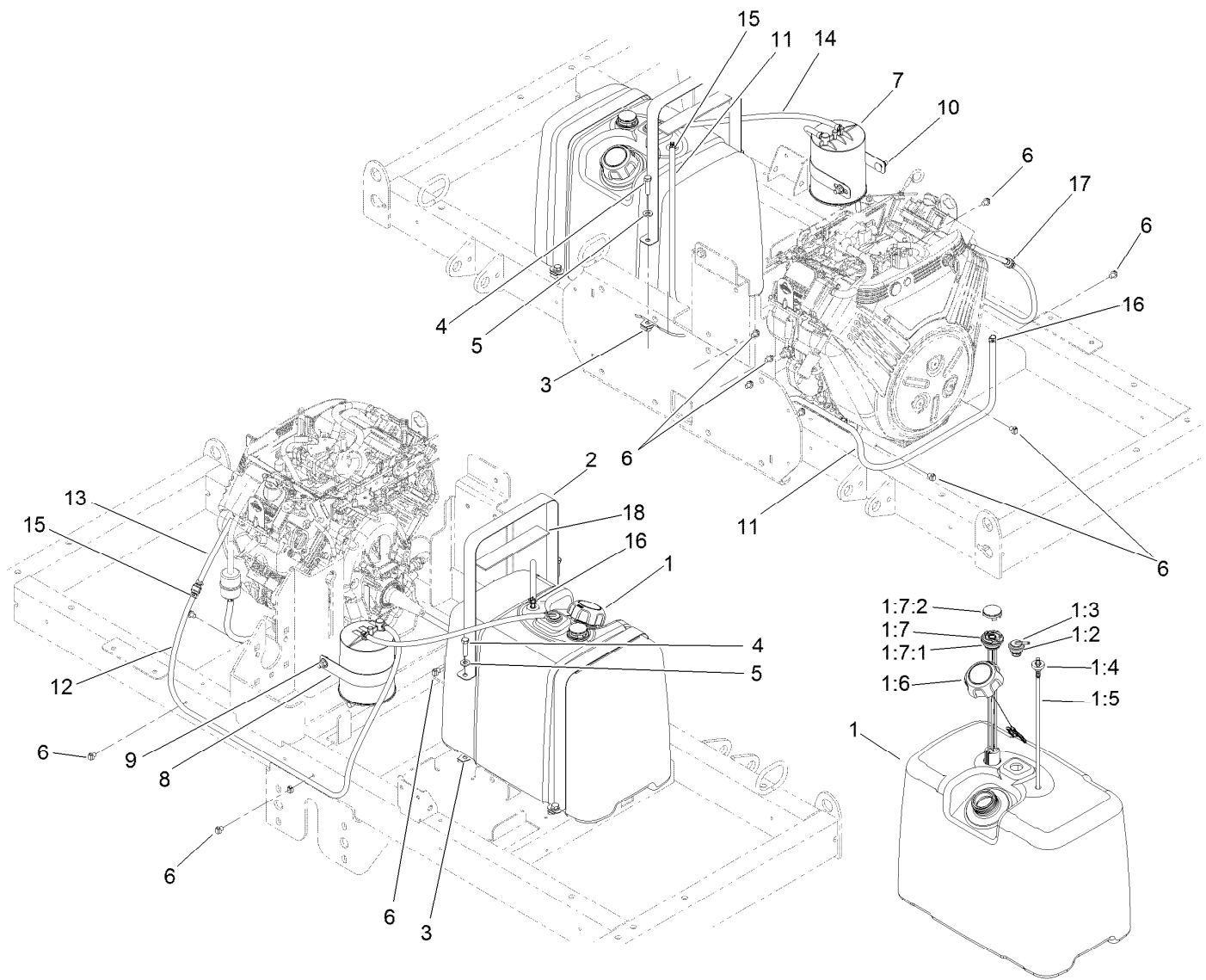
## Shield and Cover Assembly

Ref.	Part Number	Qty.	Description	Ref.	Part Number	Qty.	Description
1	114-7745	1	Rear Cover ASM	9:4	114439	2	Rivet-Pop
1:2	112-4274	2	Decal-Caution	9:5	117-8347	2	Nut-Shoulder
1:3	112-4272	2	Decal-Danger, Stay Clear	9:6	3234-24	2	Screw-HHF
1:4	115-8966	1	Decal-Logo, Processor	10	119-2982	1	Cover-Belt
1:5	112-4287	2	Decal-Danger, Pinch Point	10:2	112-4281	1	Decal-Warning, Shield (Ce)
2	114-7666-03	1	Hoop-Frame	10:3	117-8339	3	Lanyard-3 Inch
3	112-4392-03	1	Subframe	10:4	114439	3	Rivet-Pop
5	104-8301	36	Nut-Flange, NI	10:5	117-8347	3	Nut-Shoulder
6	119-2981	1	Cover-Belt	10:6	3234-24	3	Screw-HHF
6:2	112-4281	1	Decal-Warning, Shield (Ce)	11	105-4886	19	Nut-Tinnerman
6:3	117-8339	3	Lanyard-3 Inch	13	2844	25	Washer
6:4	114439	3	Rivet-Pop	14	114-7659	2	Plate-Backing, Hook
6:5	117-8347	3	Nut-Shoulder	15	114-3949	2	Pivot
6:6	3234-24	3	Screw-HHF	16	114-7656	2	Pivot ASM
7	80-6990	34	Washer-Hardened	20	3231-6	2	Screw-CARR
8	323-6	53	Screw-HH	21	112-4576	8	Nut-Clip, U
9	119-2983	1	Cover-Belt	22	114-7762	1	Fabric
9:2	112-4281	1	Decal-Warning, Shield (Ce)	23	115-2903	3	Decal-Grease (Ce)
9:3	117-8339	2	Lanyard-3 Inch				



## Belt Tensioner Assembly

<i>Ref.</i>	<i>Part Number</i>	<i>Qty.</i>	<i>Description</i>
1	115-2925	1	Tool-Belt Tensioner



## Fuel System Assembly

Ref.	Part Number	Qty.	Description	Ref.	Part Number	Qty.	Description
1	115-9047	1	Fuel Tank ASM	6	32180-030	6	Clip-Harness
1:2	114-0284	1	Grommet	7	114-0289	1	Canister-Carbon
1:3	114-0285	1	Valve-Rollover	8	117-8399	1	Strap-Mounting
1:4	46-6560	1	Bushing	9	104-8301	2	Nut-Flange, NI
1:5	115-9046	1	Stand Pipe	10	3231-2	2	Screw-CARR
1:6	115-7788	1	Cap-Fuel	11	108-3682	1	Hose-Fuel
1:7	119-0507	1	Gauge-Fuel	12	117-9945	1	Hose-Fuel
1:7:1	119-0508	1	Seal	13	51-3214	1	Hose-Fuel
1:7:2	117-8404	1	Dial-Gauge	14	110-8751	1	Hose-Fuel
2	119-2965	2	Strap-Tank	15	2412-80	6	Clamp-Line, Fuel
3	105-4886	4	Nut-Tinnerman	16	2412-98	2	Clamp
4	323-8	4	Screw-HH	17	115-7868	1	Valve-Check, Vacuum
5	100-4852	4	Washer-Hardened	18	104-7102	2	Pad-Battery



# Attachments and Accessories

## For 09749 ProCore Processor

<b>Product Name</b>	<b>Model/Part</b>
Tow Hitch .....	09750
OnePass Hitch.....	09753
Windrow Kit .....	09760
Wheel Kit .....	09768
Slow-Moving Vehicle Sign Kit .....	114-7799

**Notes:**

**Notes:**



**Count on it.**